

Planning Team

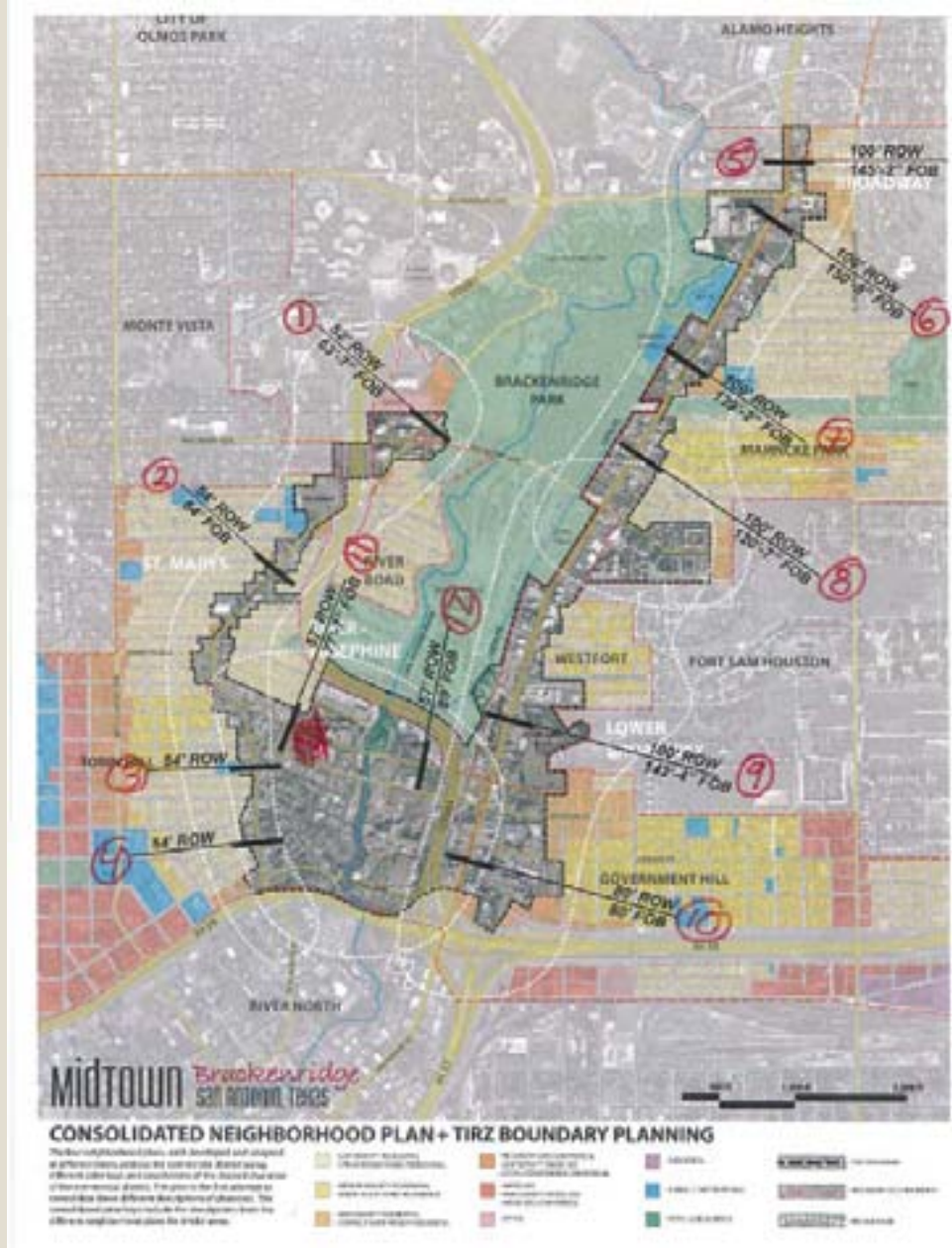
October 11, 2010

Street Section Map

St. Mary's Street: Sections 1 - 4

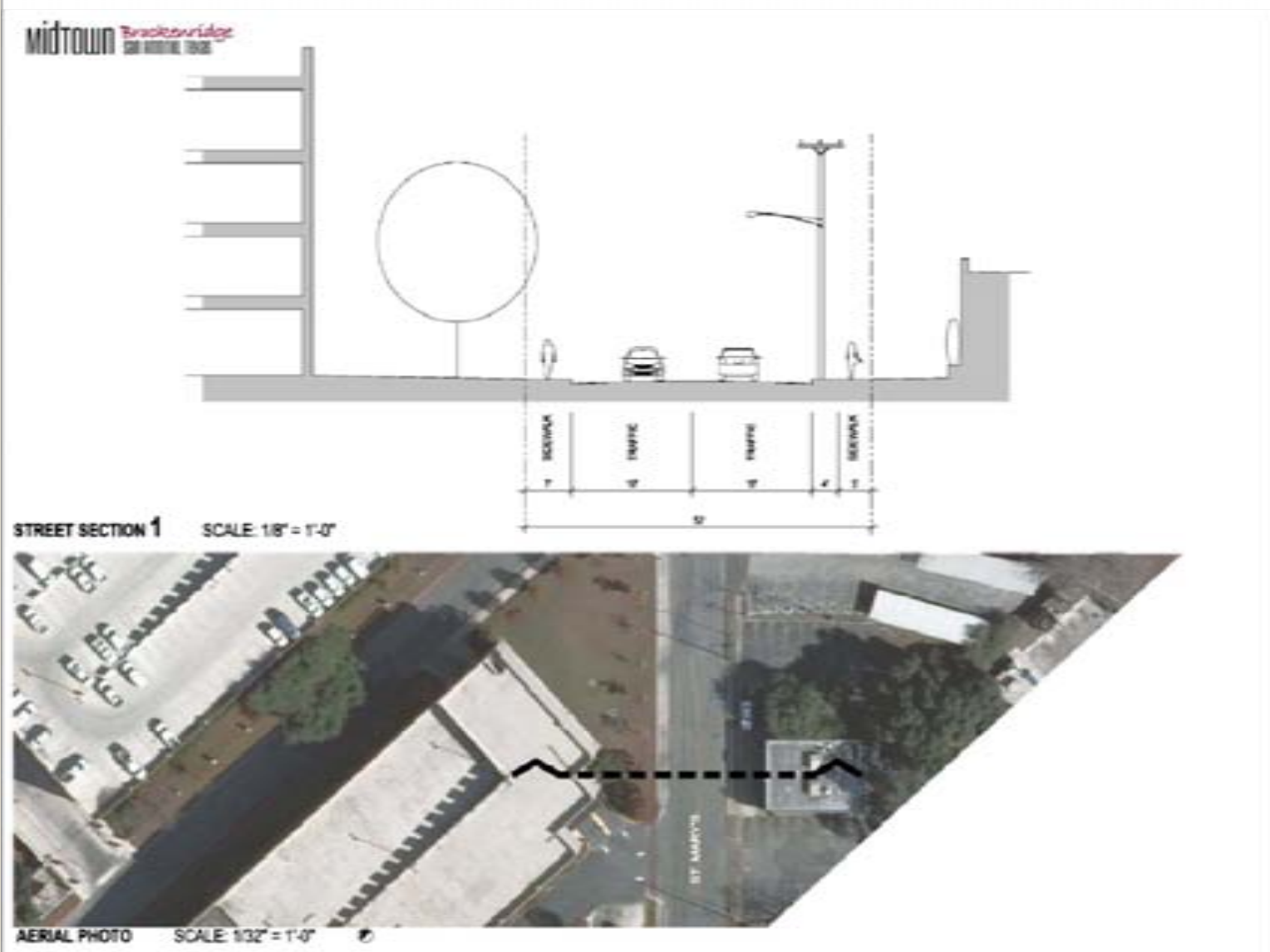
Broadway Street: Sections 5 - 10

Josephine Street: Sections 11 - 12



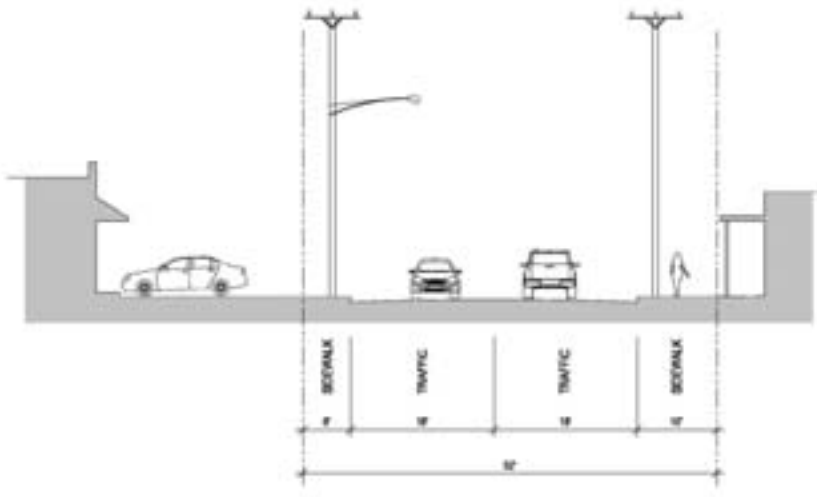
Midtown *Brackenridge*
SAN ANTONIO, TEXAS

Existing Condition
St. Mary's Street (52' R.O.W.)



Existing Condition St. Mary's Street (52' R.O.W.)

Midtown *Brackenridge*
SAN ANTONIO, TEXAS

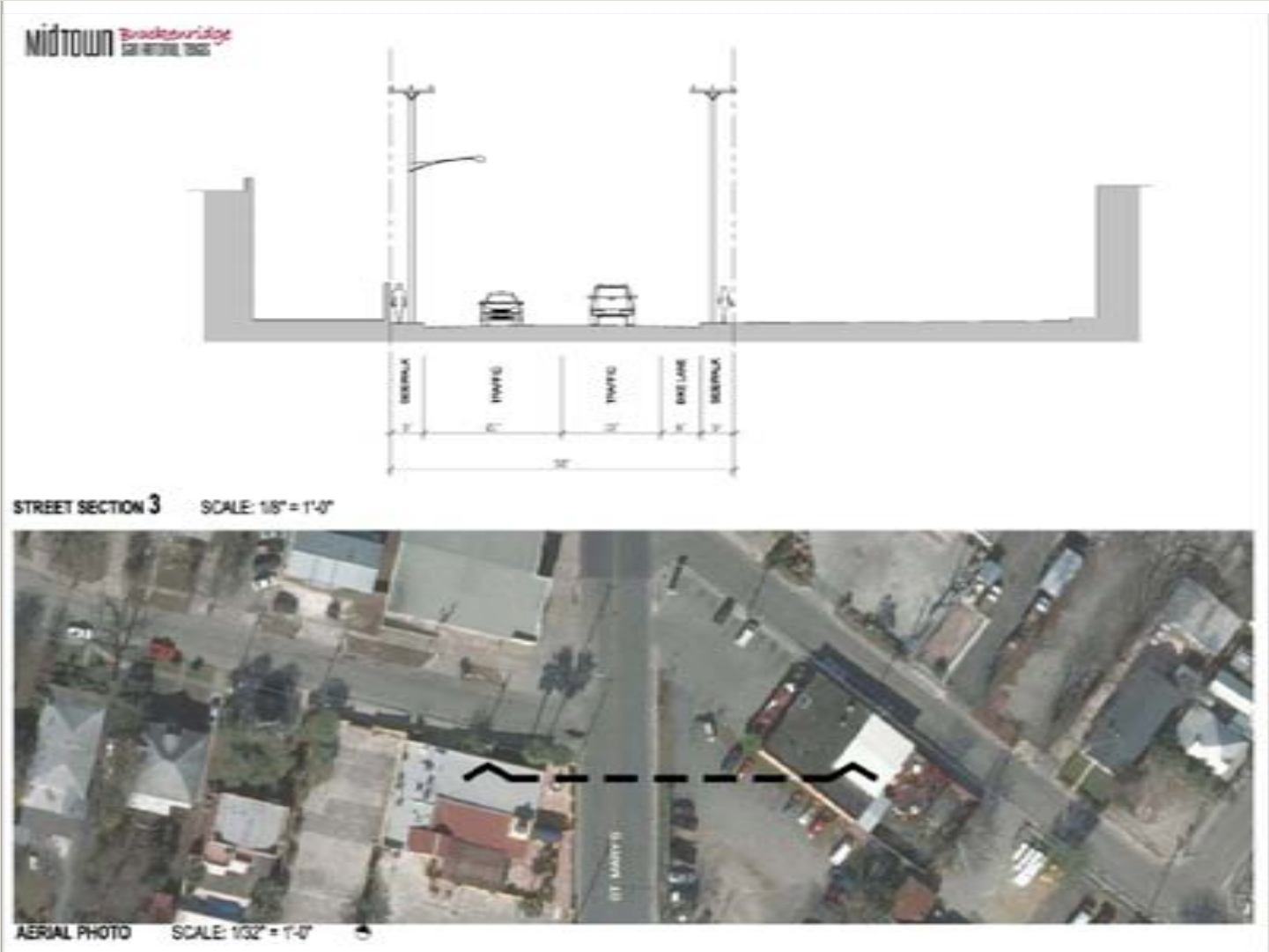


STREET SECTION 2 SCALE: 1/8" = 1'-0"

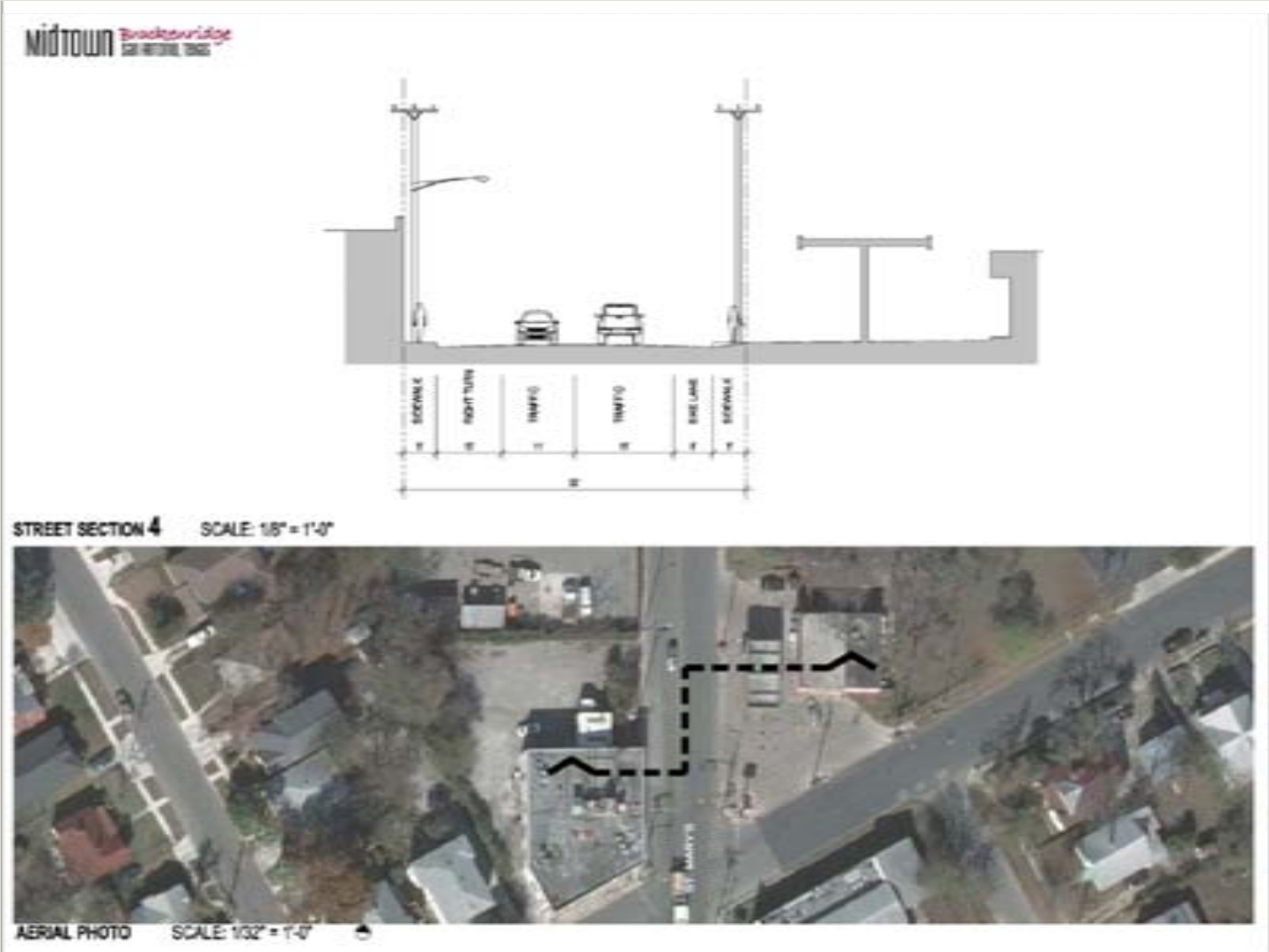


AERIAL PHOTO SCALE: 1/32" = 1'-0"

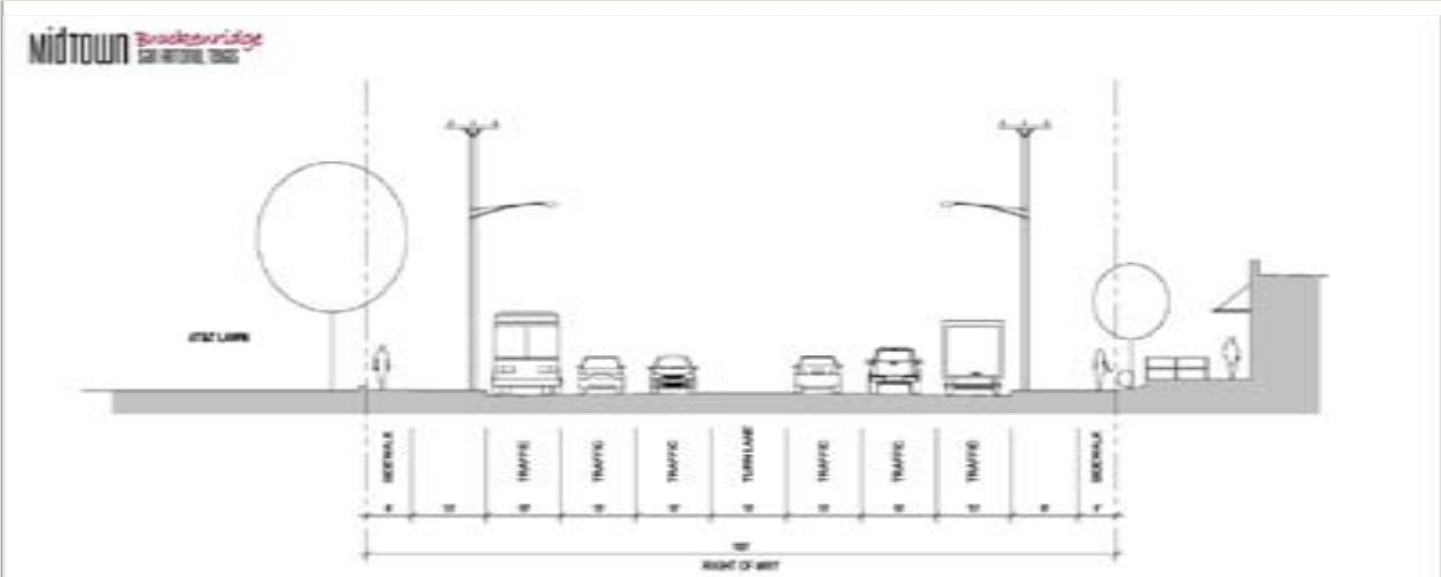
Existing Condition
St. Mary's Street (52' R.O.W.)



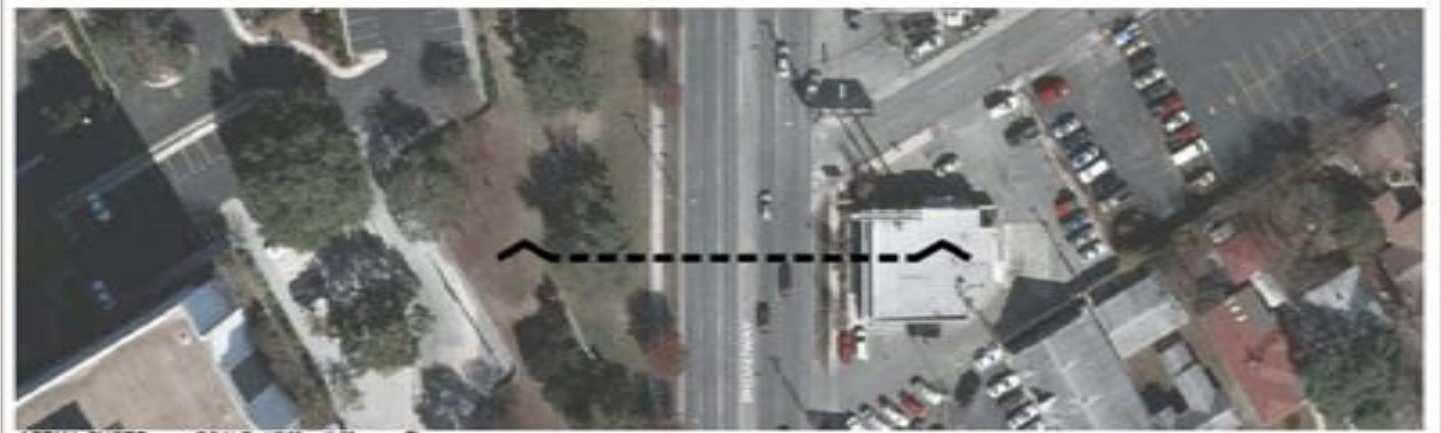
Existing Condition St. Mary's Street (52' R.O.W.)



Existing Condition Broadway Street (100' R.O.W.)

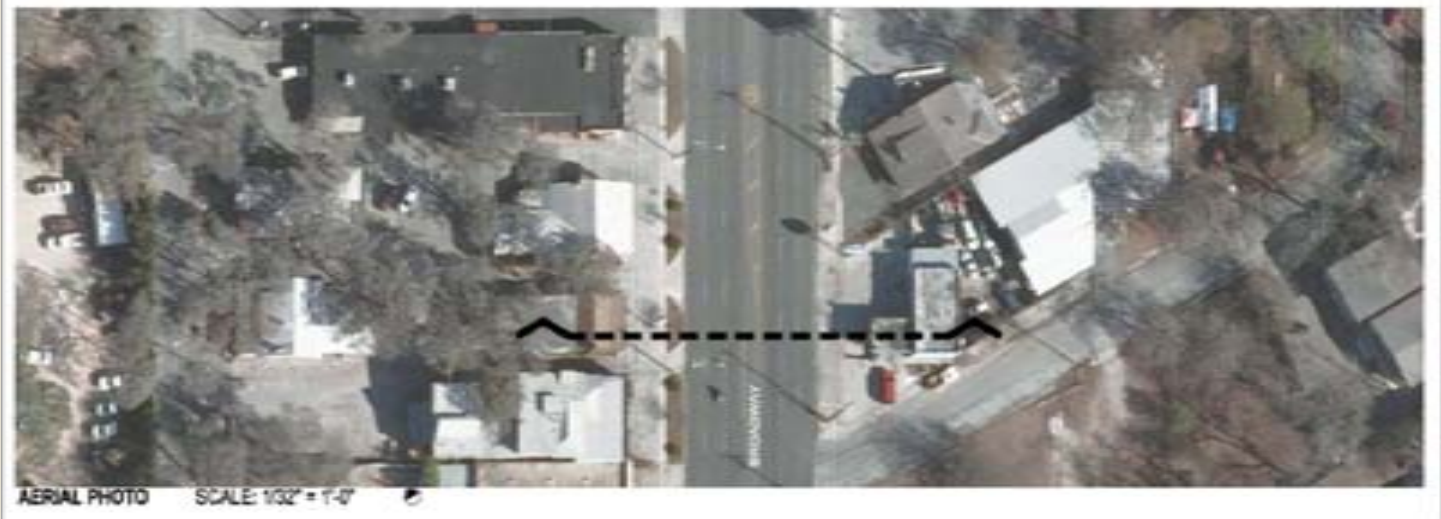
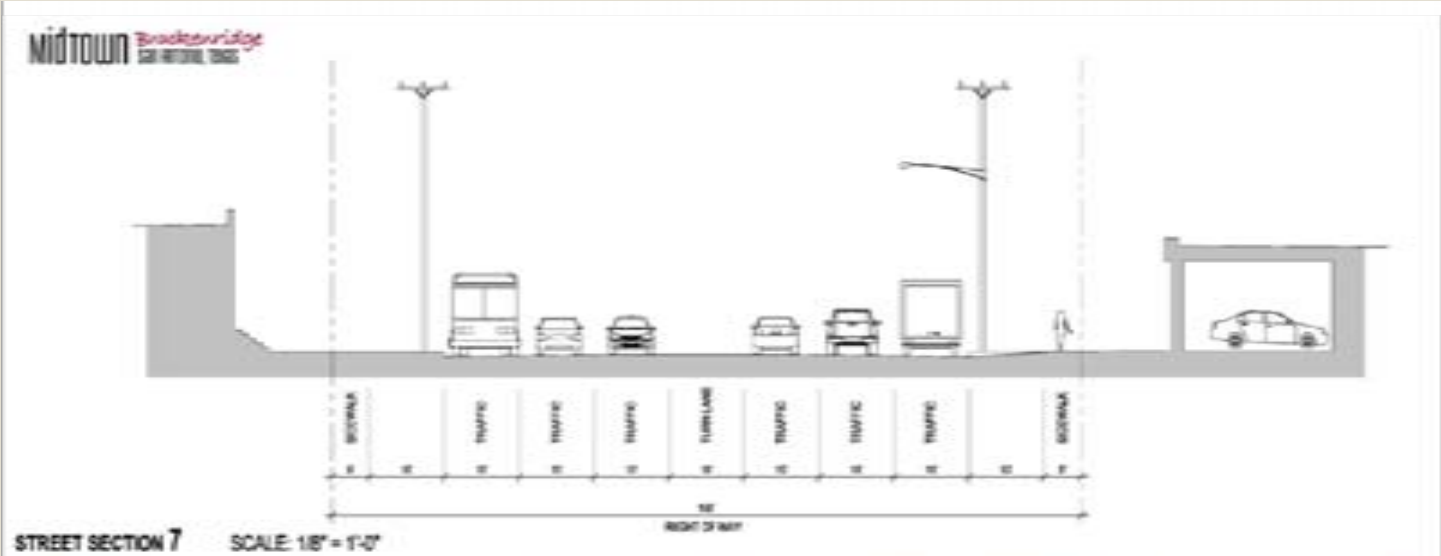


STREET SECTION 6 SCALE: 1/8" = 1'-0"

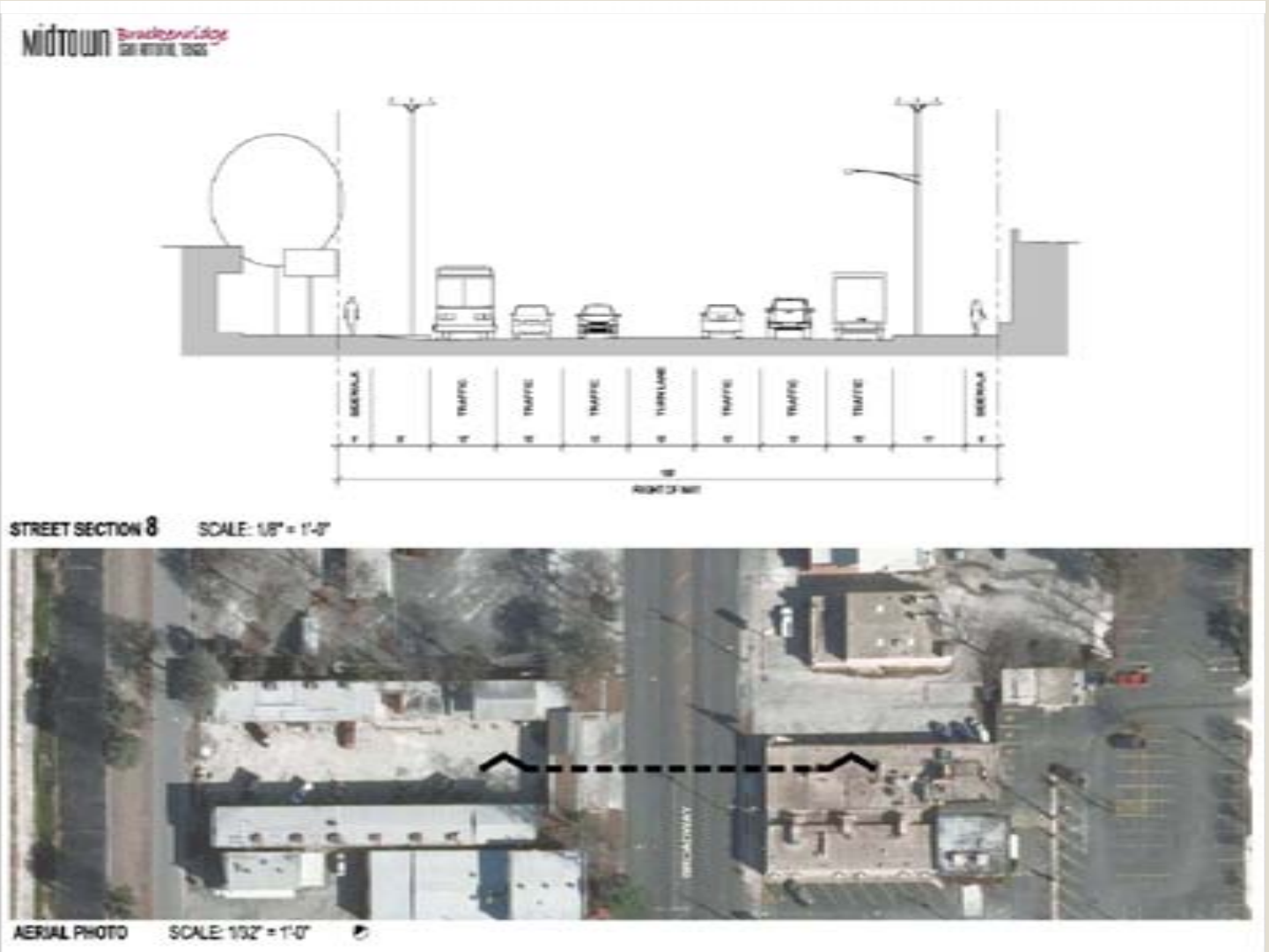


AERIAL PHOTO SCALE: 1/32" = 1'-0"

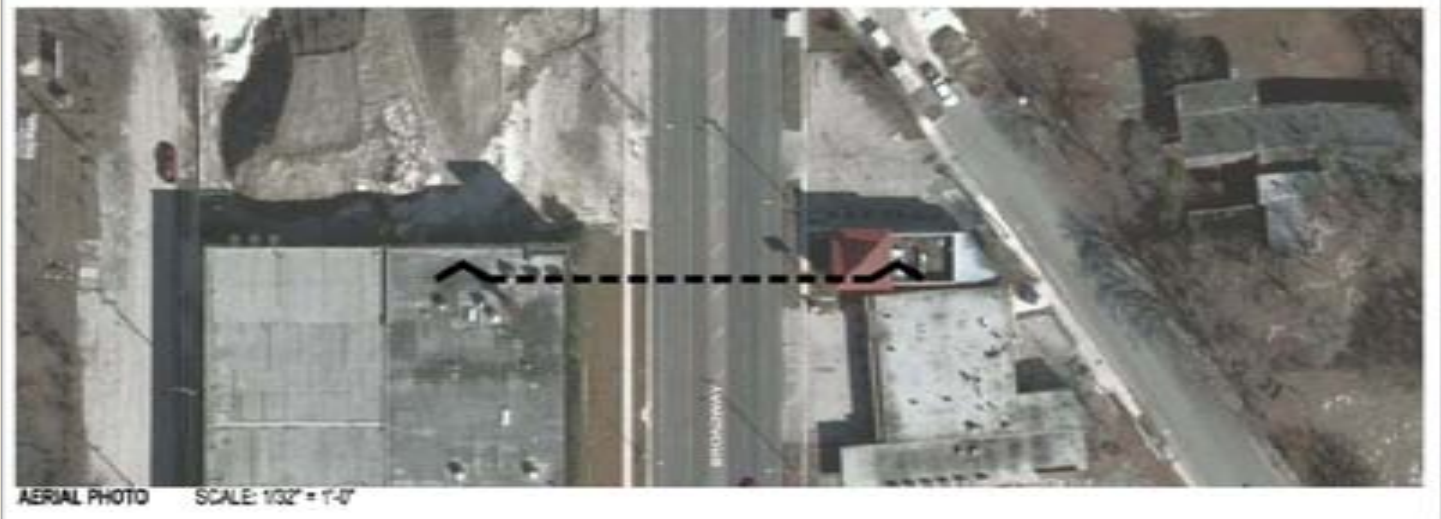
Existing Condition Broadway Street (100' R.O.W.)



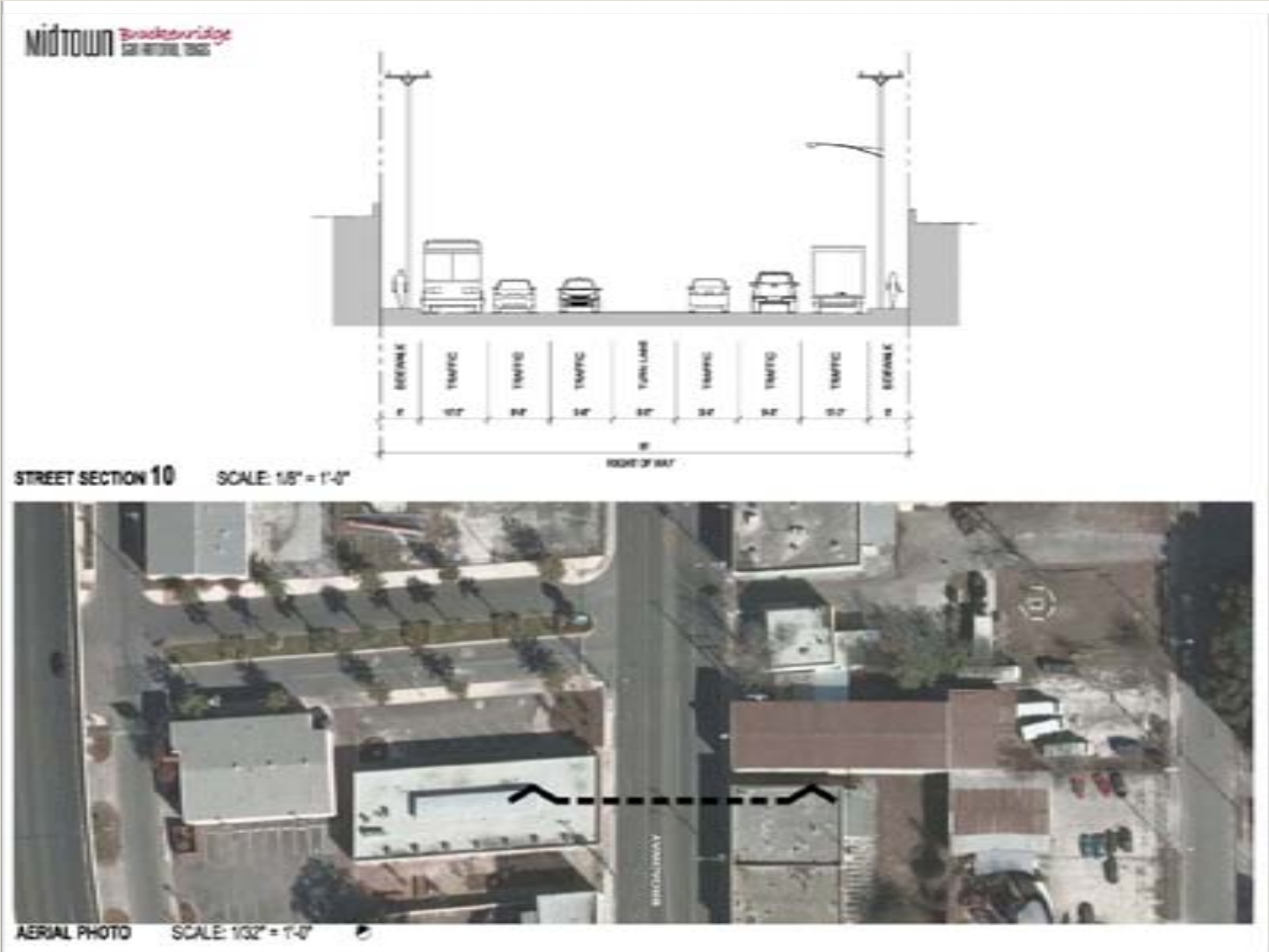
Existing Condition Broadway Street (100' R.O.W.)



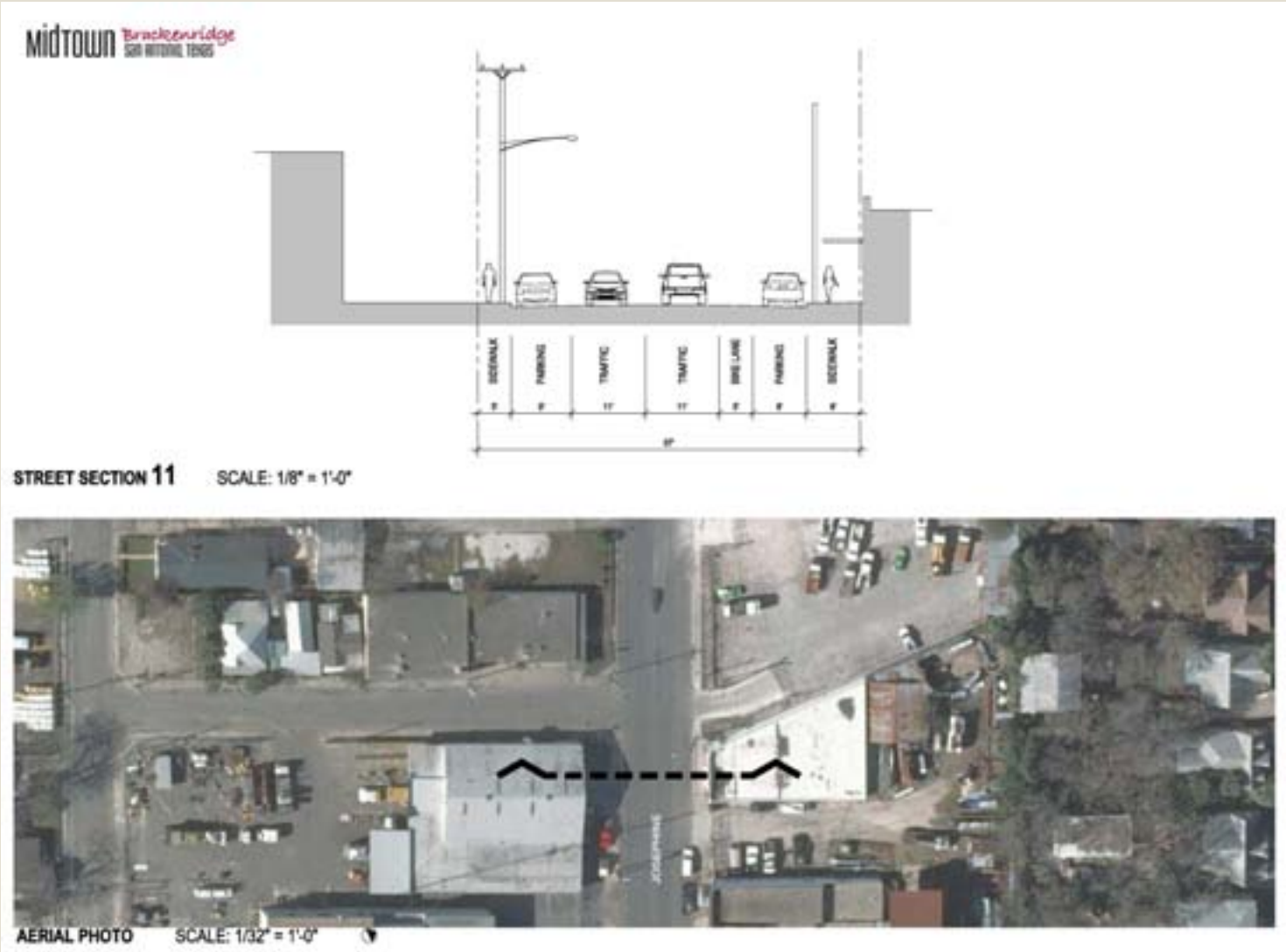
Existing Condition Broadway Street (100' R.O.W.)



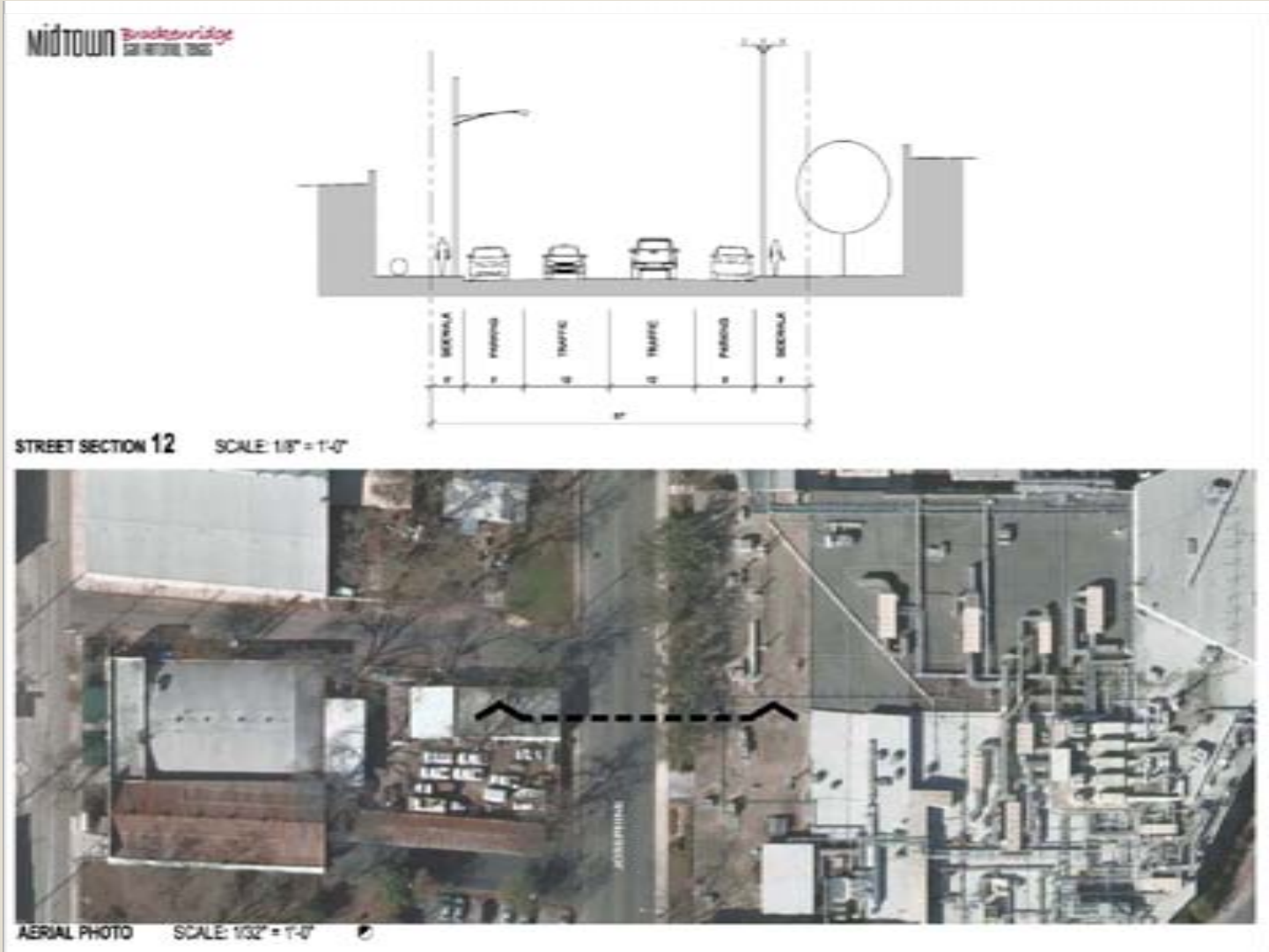
Existing Condition Broadway Street (80' R.O.W.)



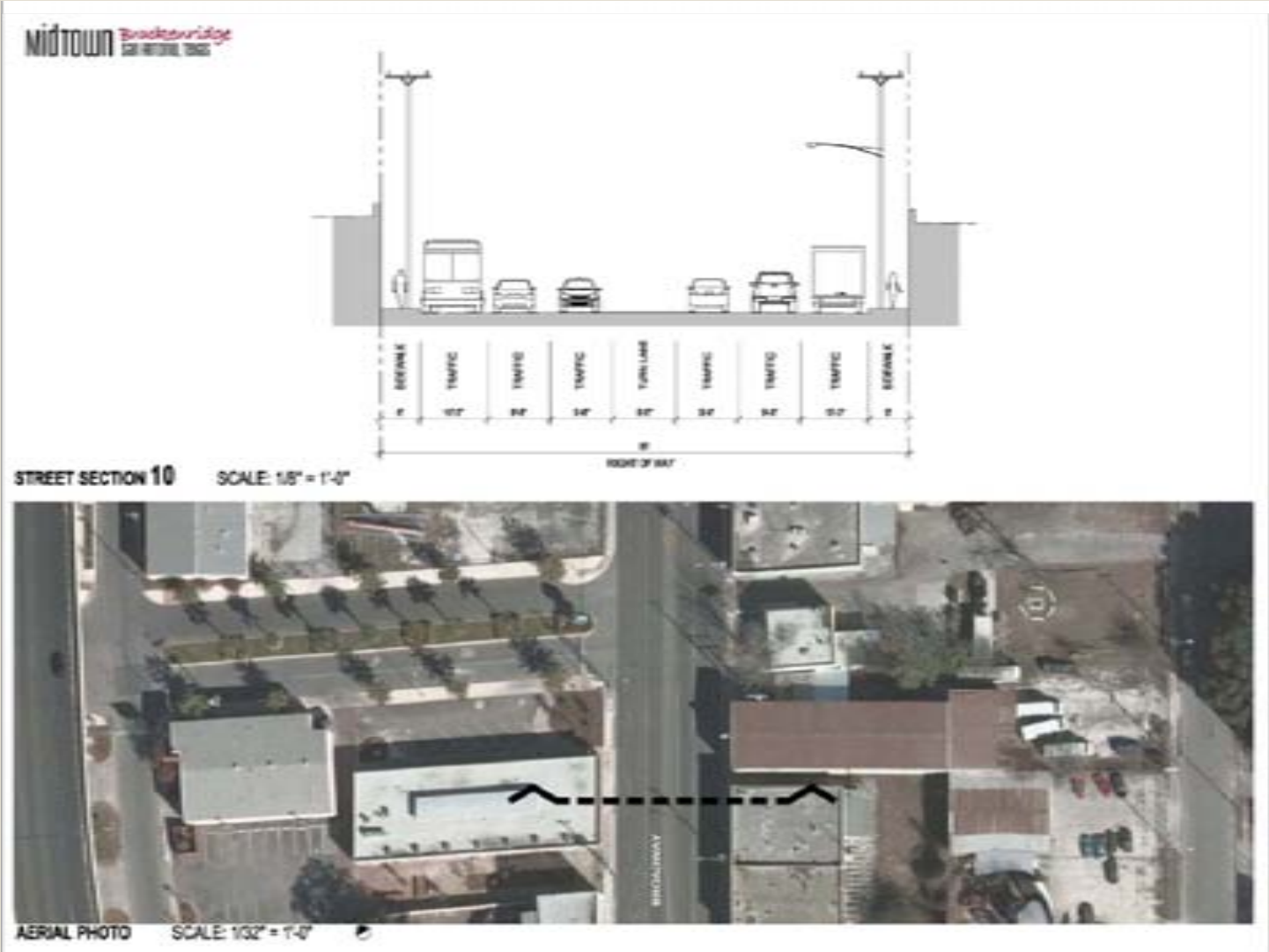
Existing Condition Josephine Street (57' R.O.W.)



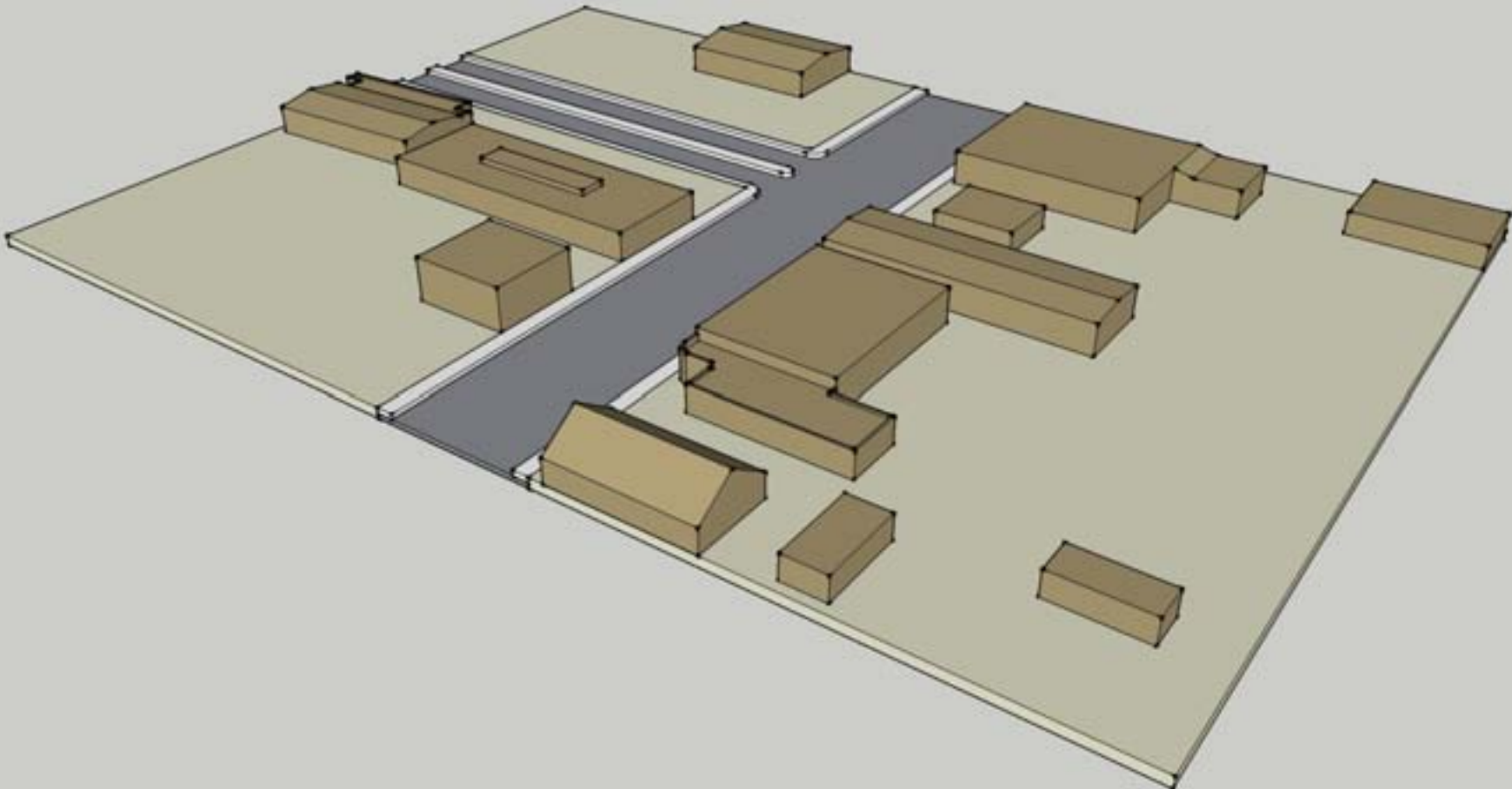
Existing Condition Josephine Street (57' R.O.W.)



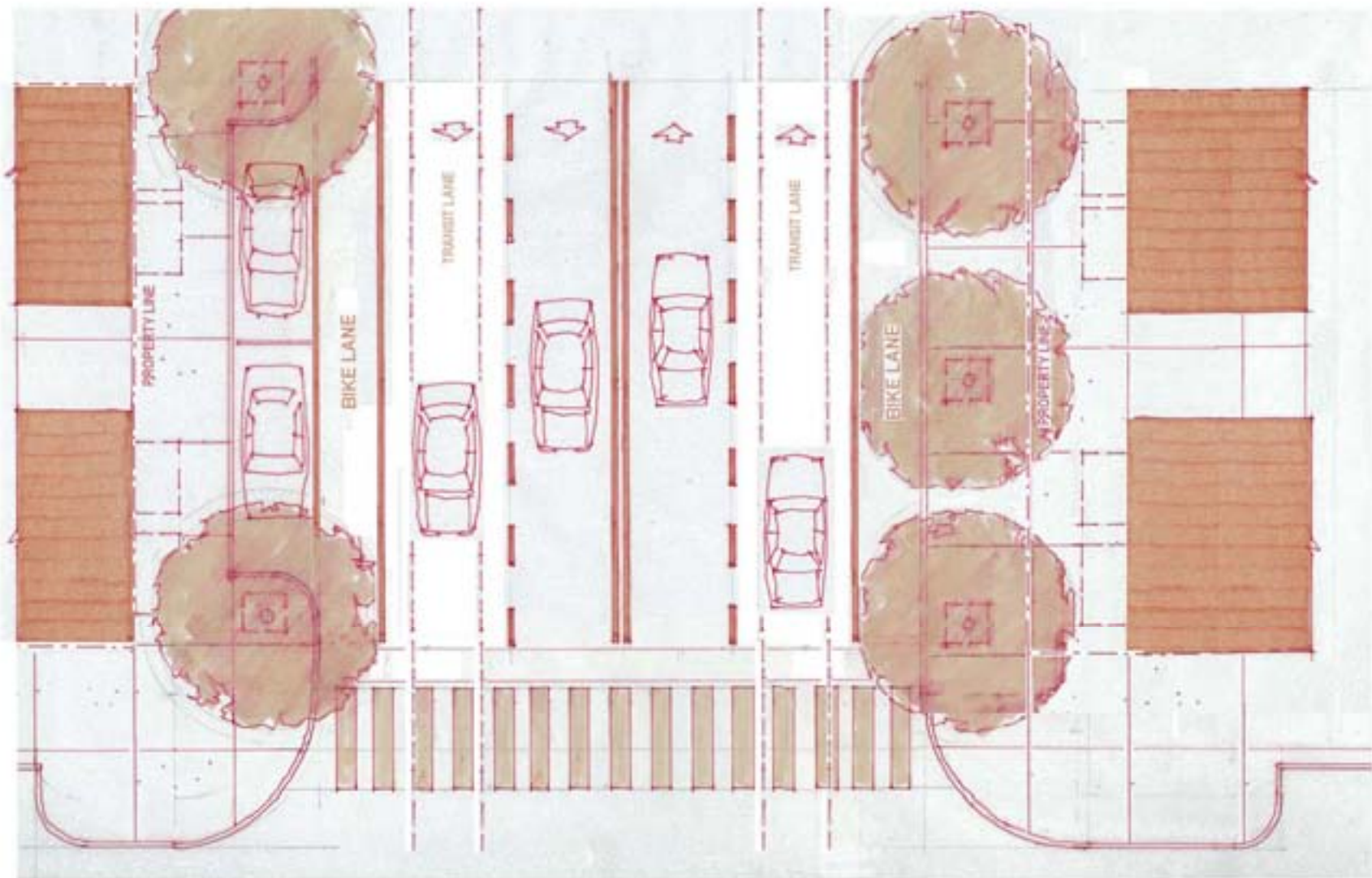
Existing Condition Broadway Street (80' R.O.W.)



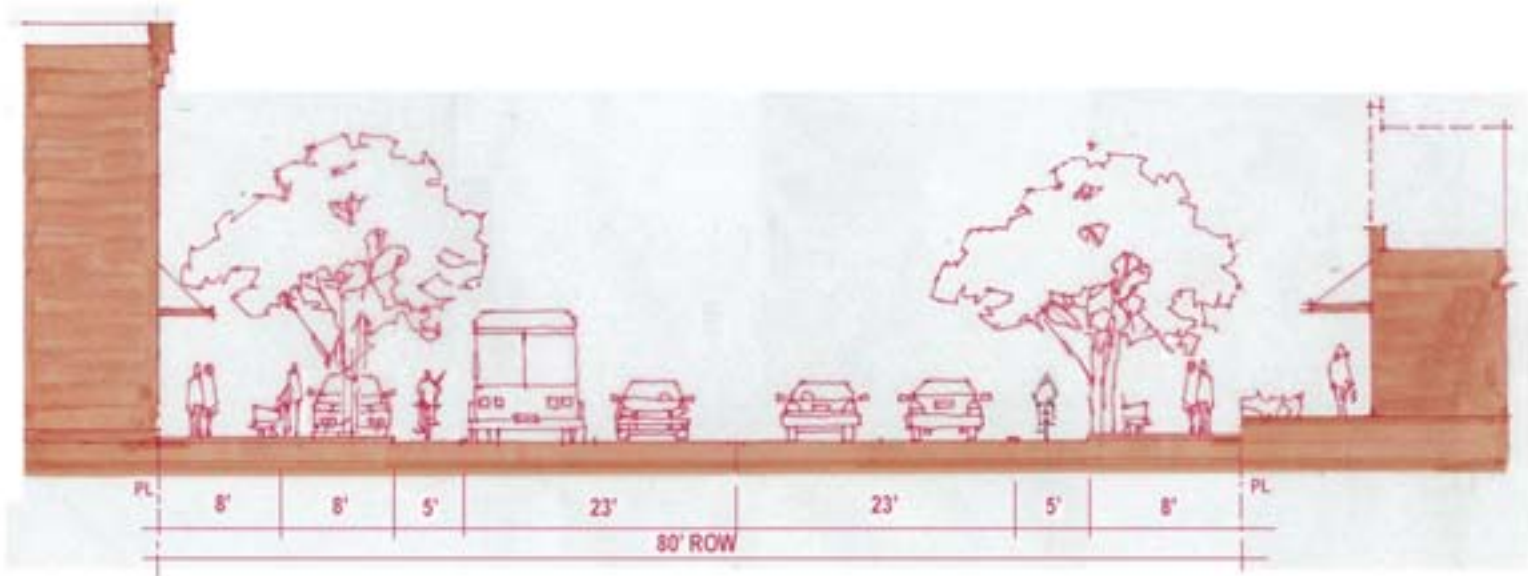
Existing Condition - Bird's Eye Perspective
Broadway Street (80' R.O.W.)



Option 1 - Plan
Broadway Street (80' R.O.W.)



Option 1 - Section
Broadway Street (80' R.O.W.)



Option 1 - Section
Broadway Street (80' R.O.W.)



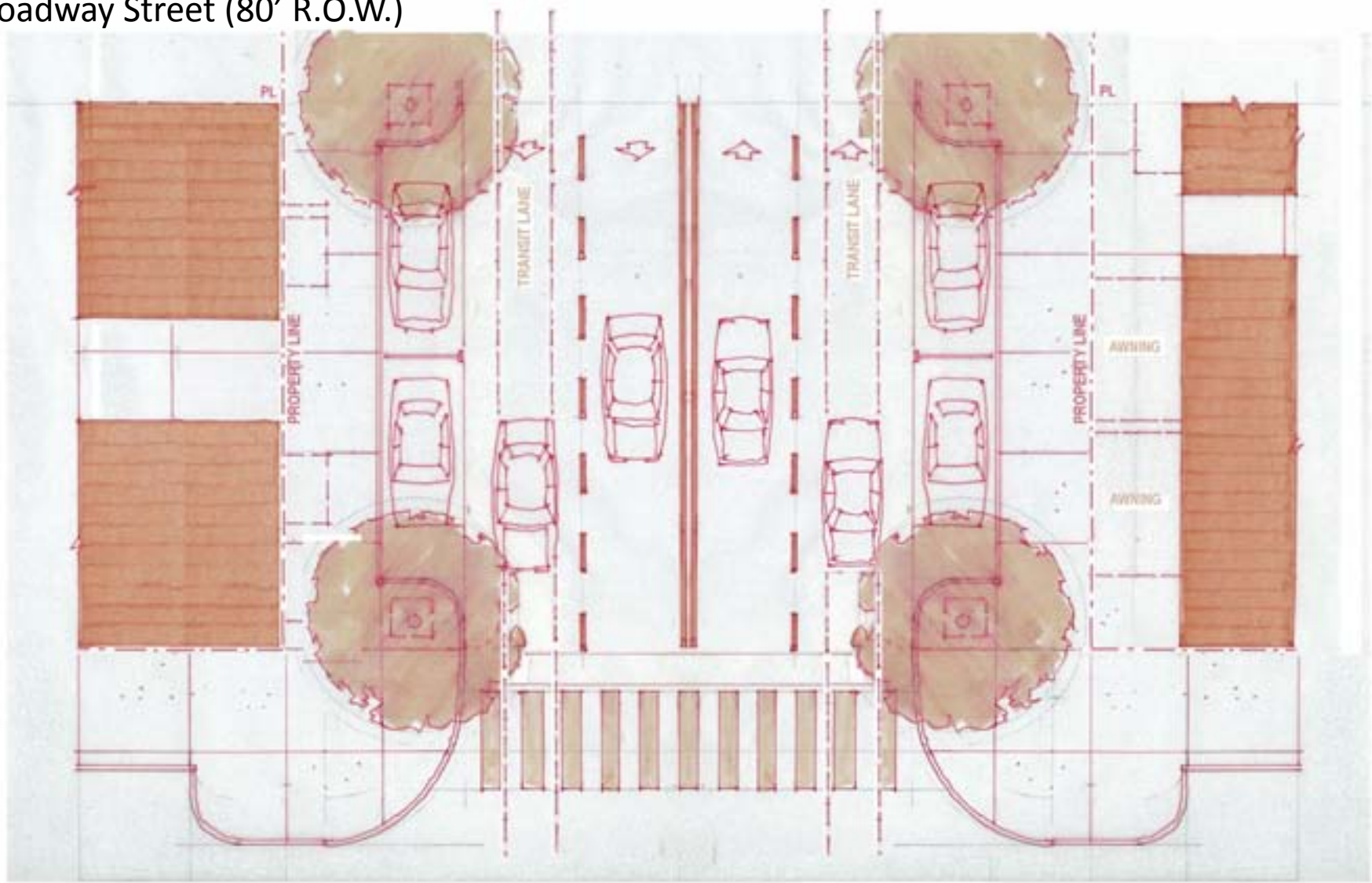
MIDTOWN *Brackenridge*
SAN ANTONIO, TEXAS

Option 1 - Section
Broadway Street (80' R.O.W.)

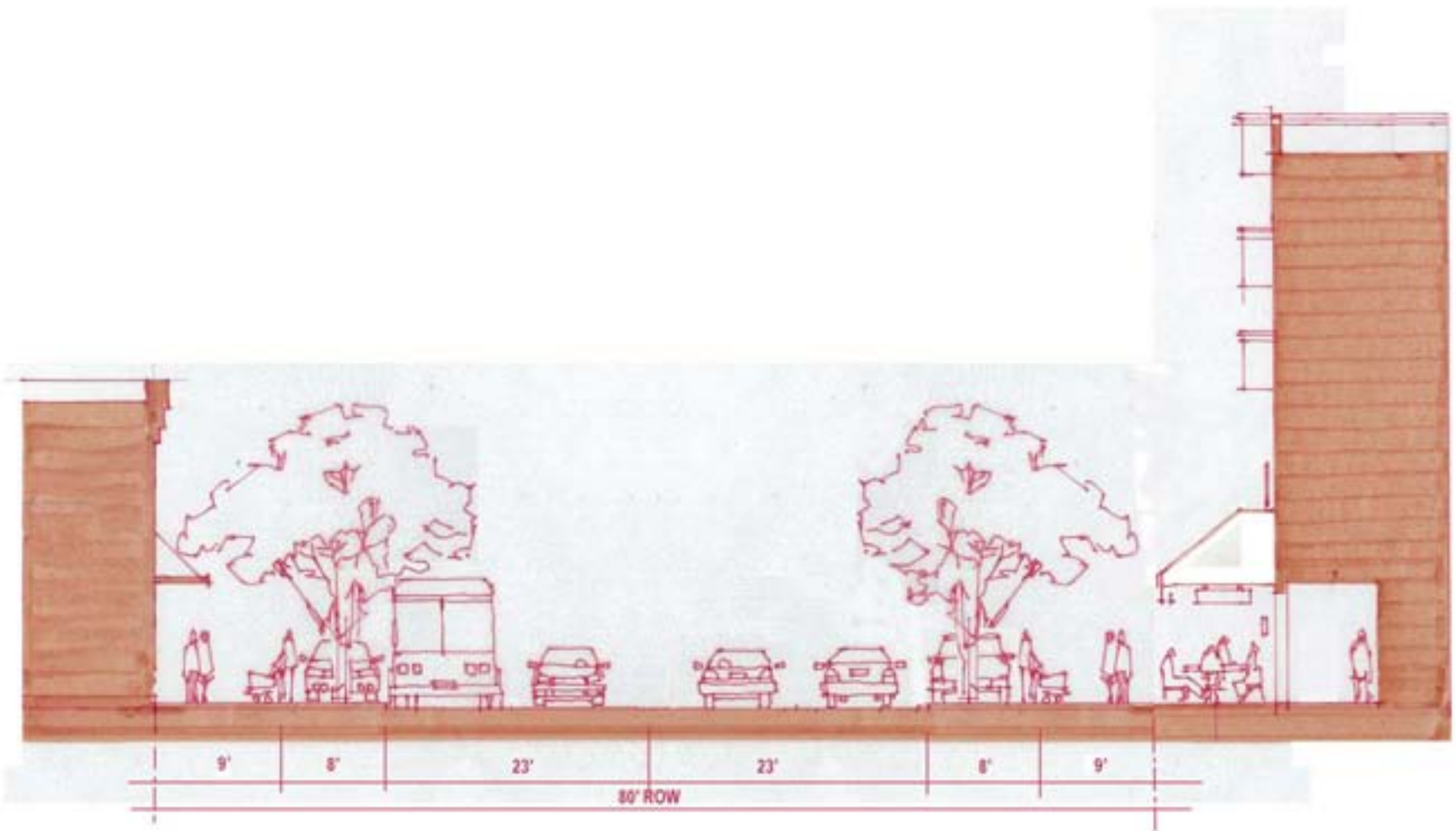


MIDTOWN *Brackenridge*
SAN ANTONIO, TEXAS

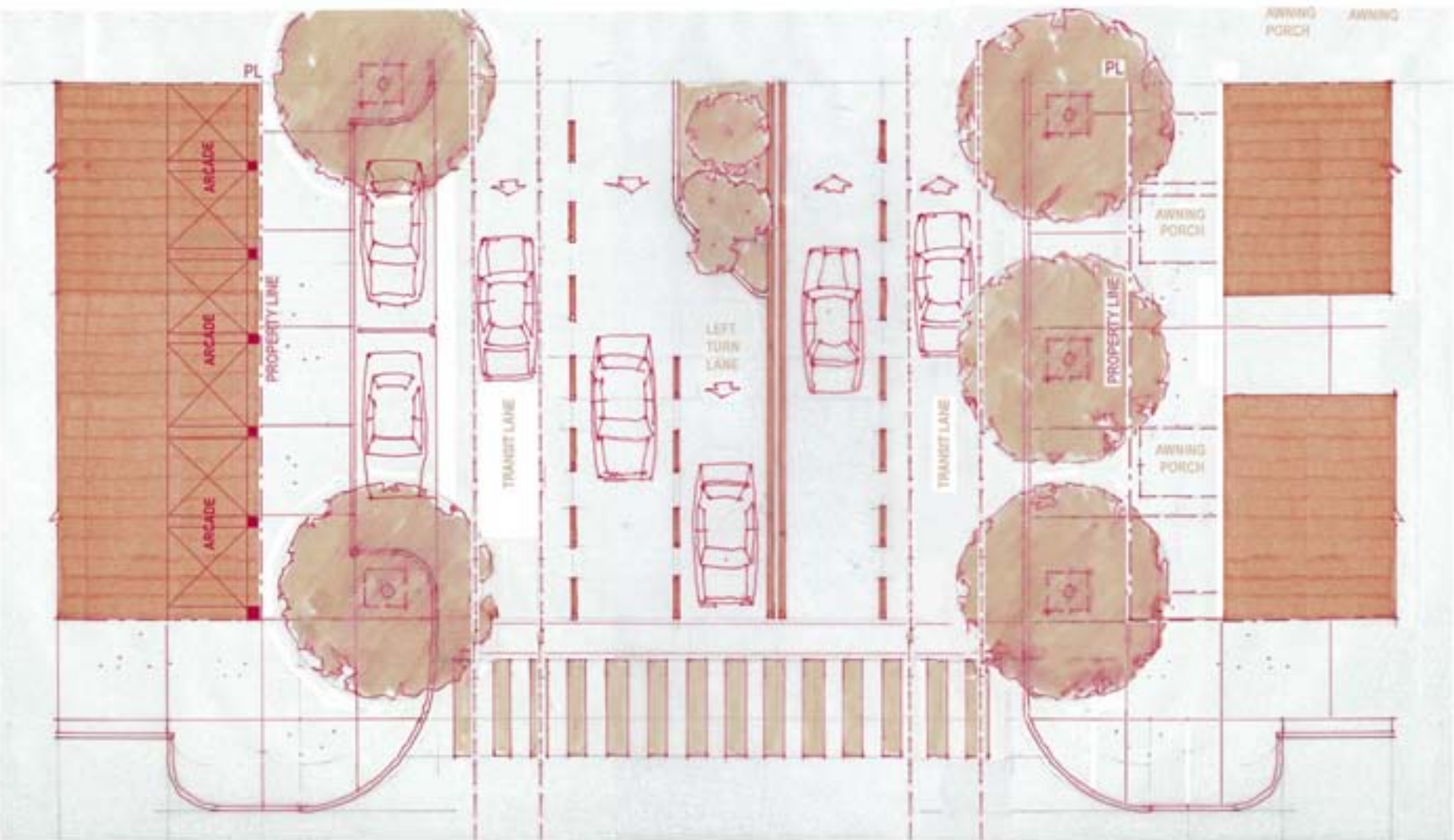
Option 2 - Plan
Broadway Street (80' R.O.W.)



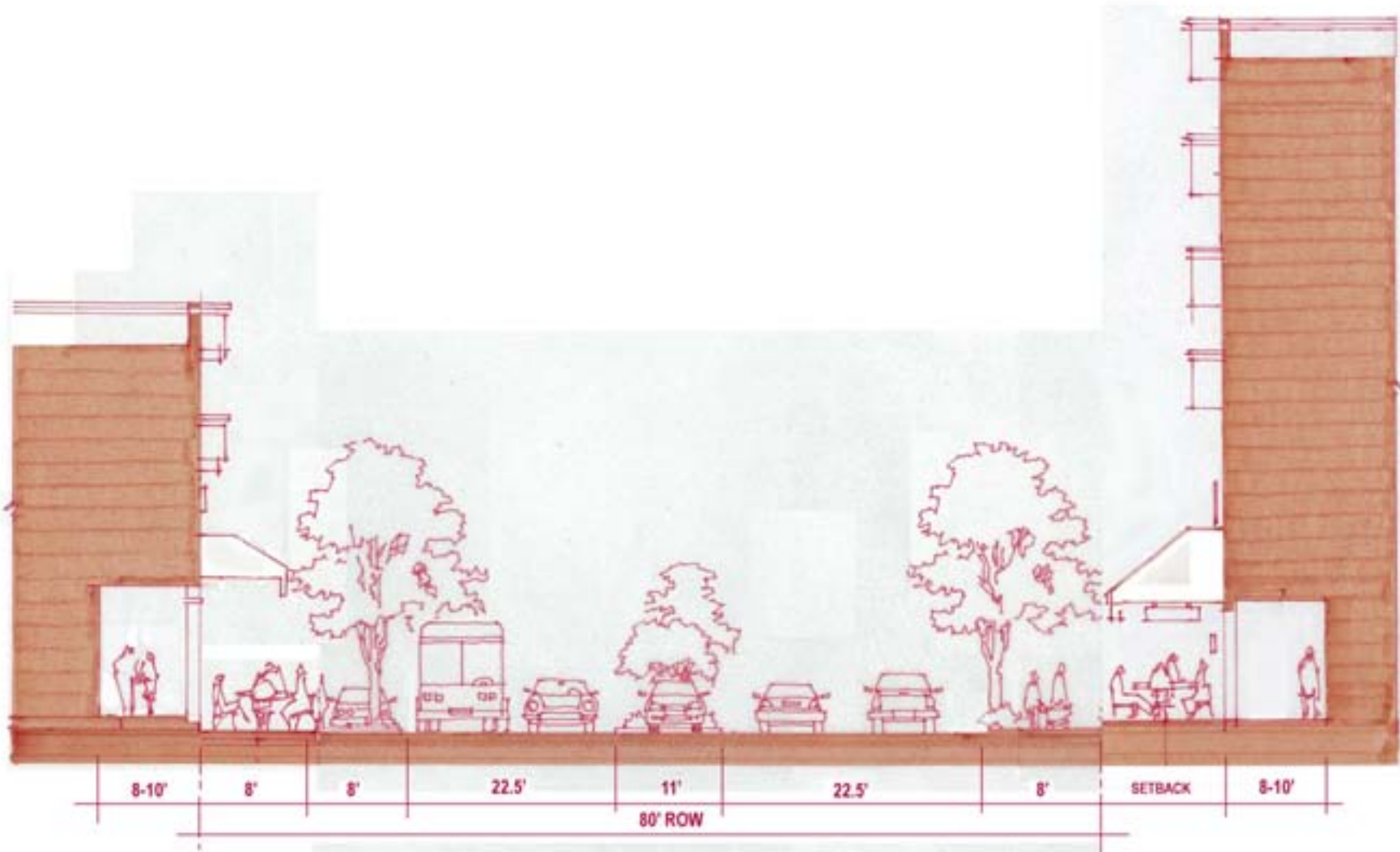
Option 2 - Section
Broadway Street (80' R.O.W.)



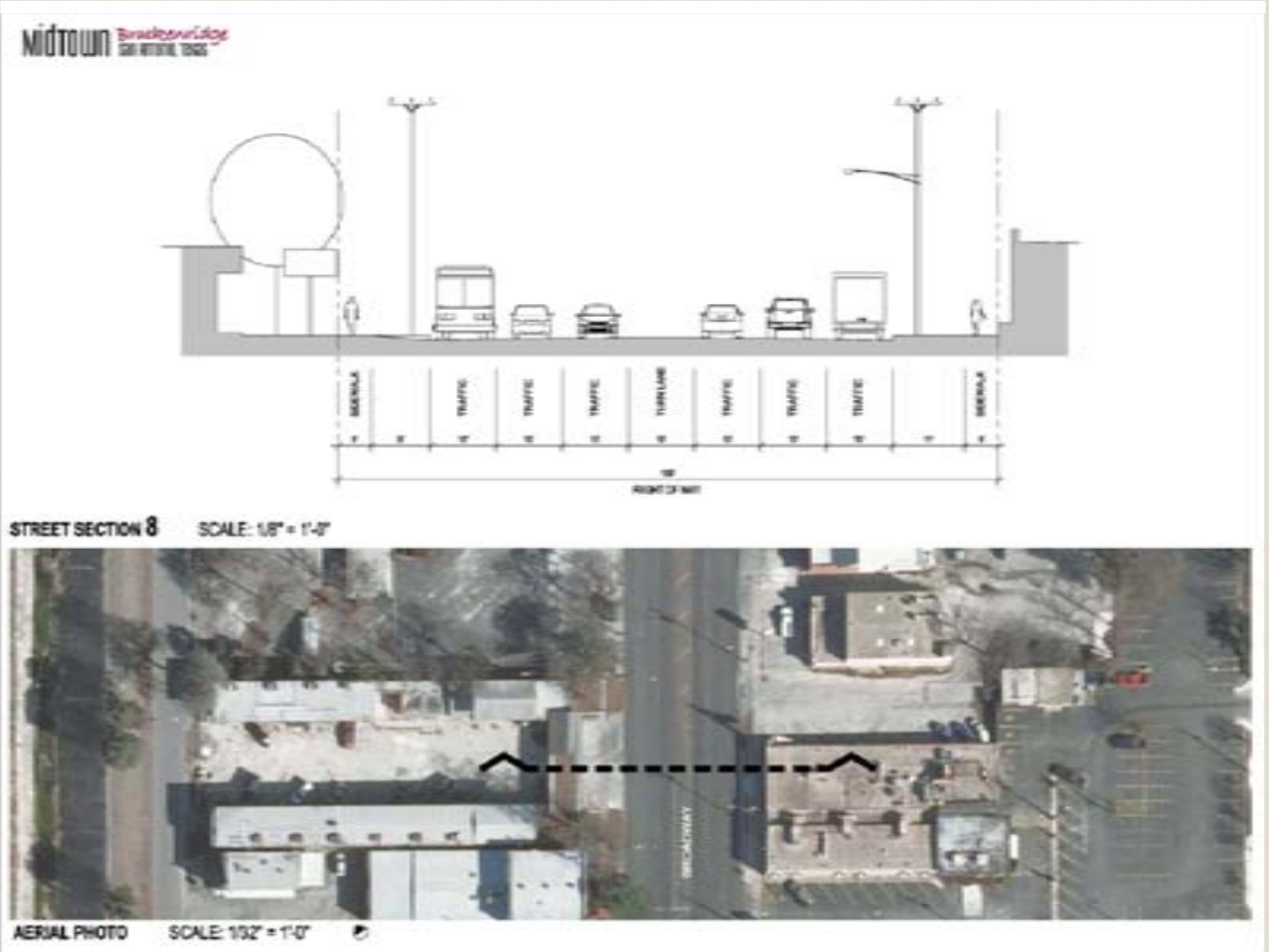
Option 3 - Plan
Broadway Street (80' R.O.W.)



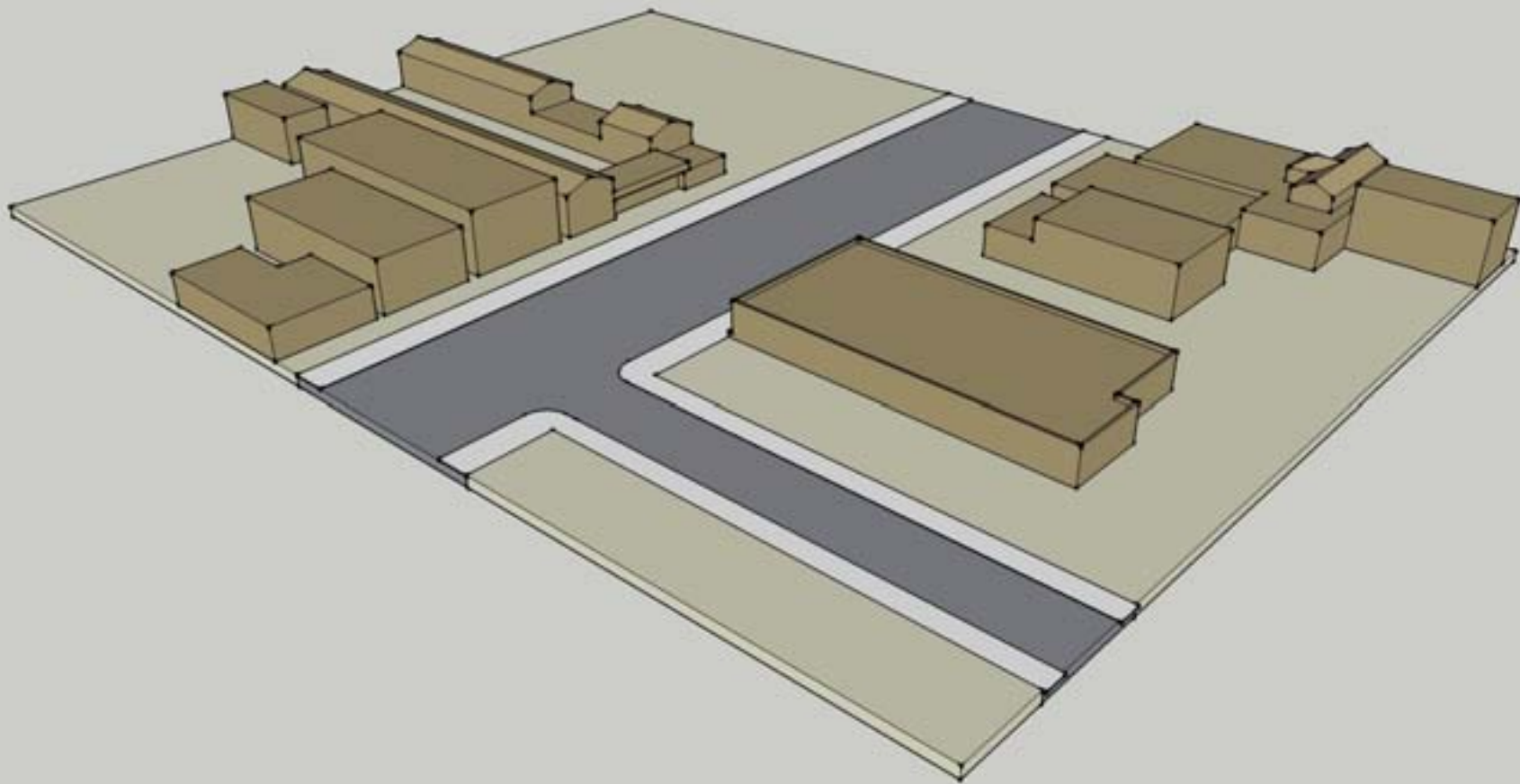
Option 3 - Section
Broadway Street (80' R.O.W.)



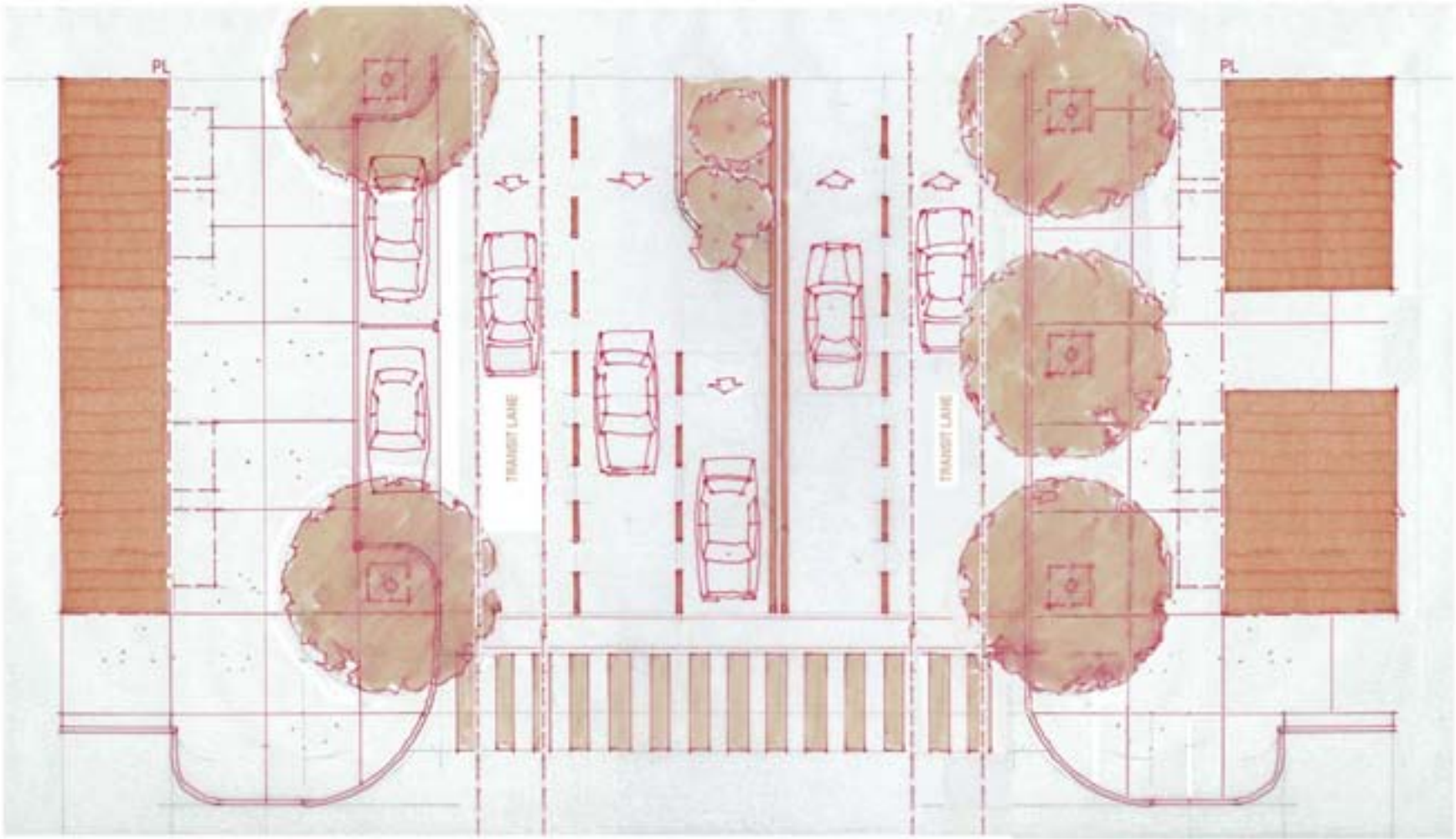
Existing Condition Broadway Street (100' R.O.W.)



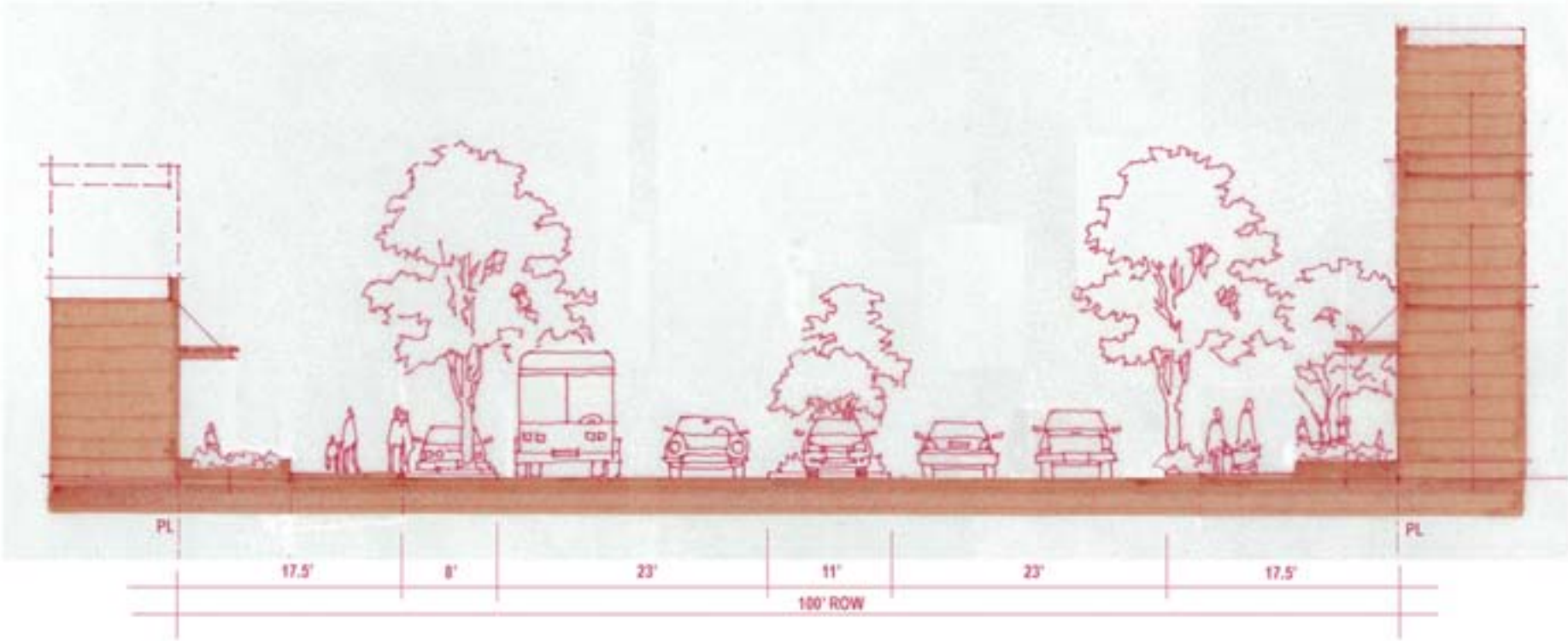
Existing Condition - Bird's Eye Perspective
Broadway Street (100' R.O.W.)



Option 1 - Plan
Broadway Street (100' R.O.W.)



Option 1 - Section
Broadway Street (100' R.O.W.)



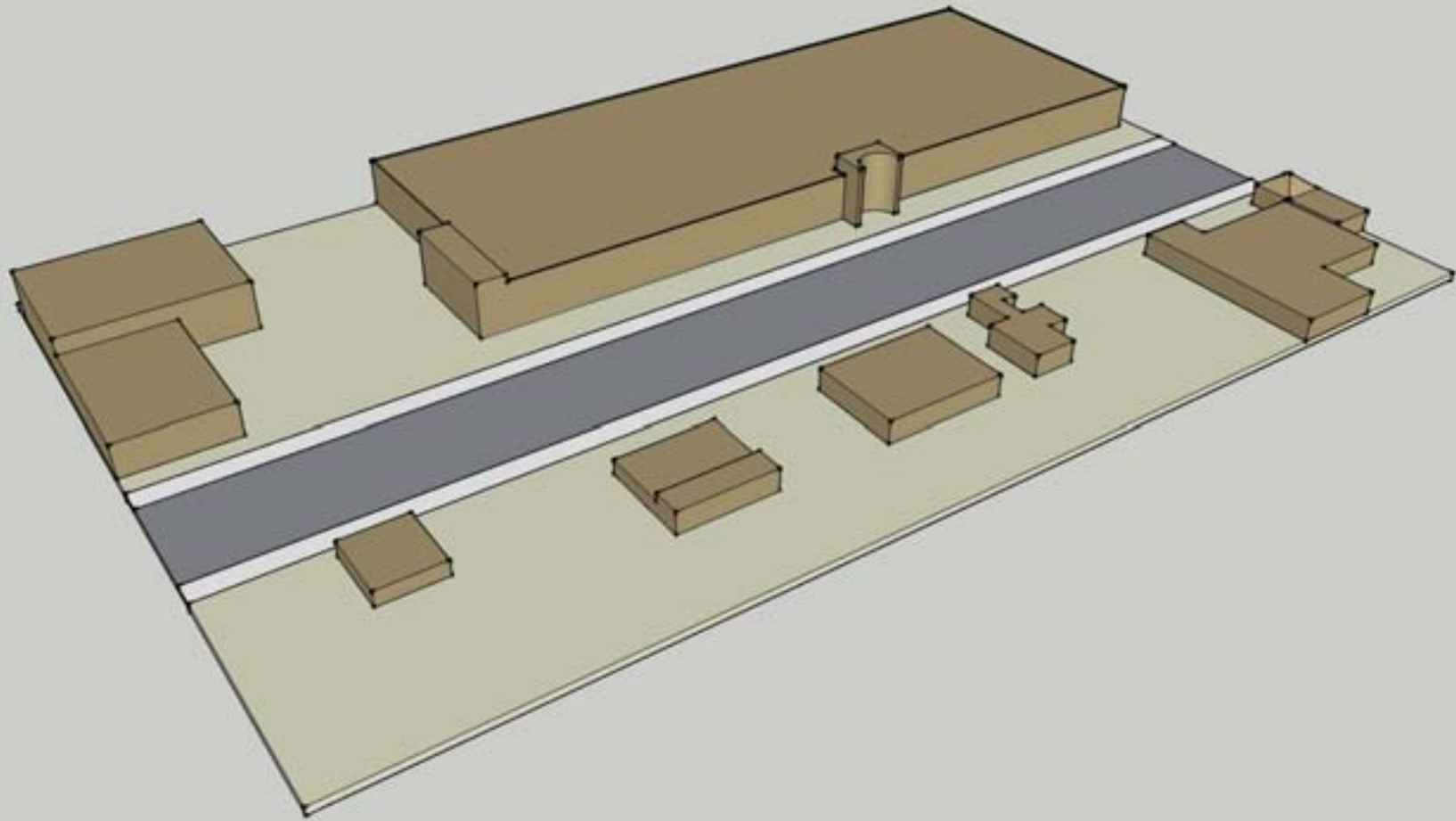
Option 1 - Bird's Eye Perspective
Broadway Street (100' R.O.W.)



Option 1 - Street Perspective
Broadway Street (100' R.O.W.)



Existing Condition - Bird's Eye Perspective
Broadway Street (100' R.O.W.)



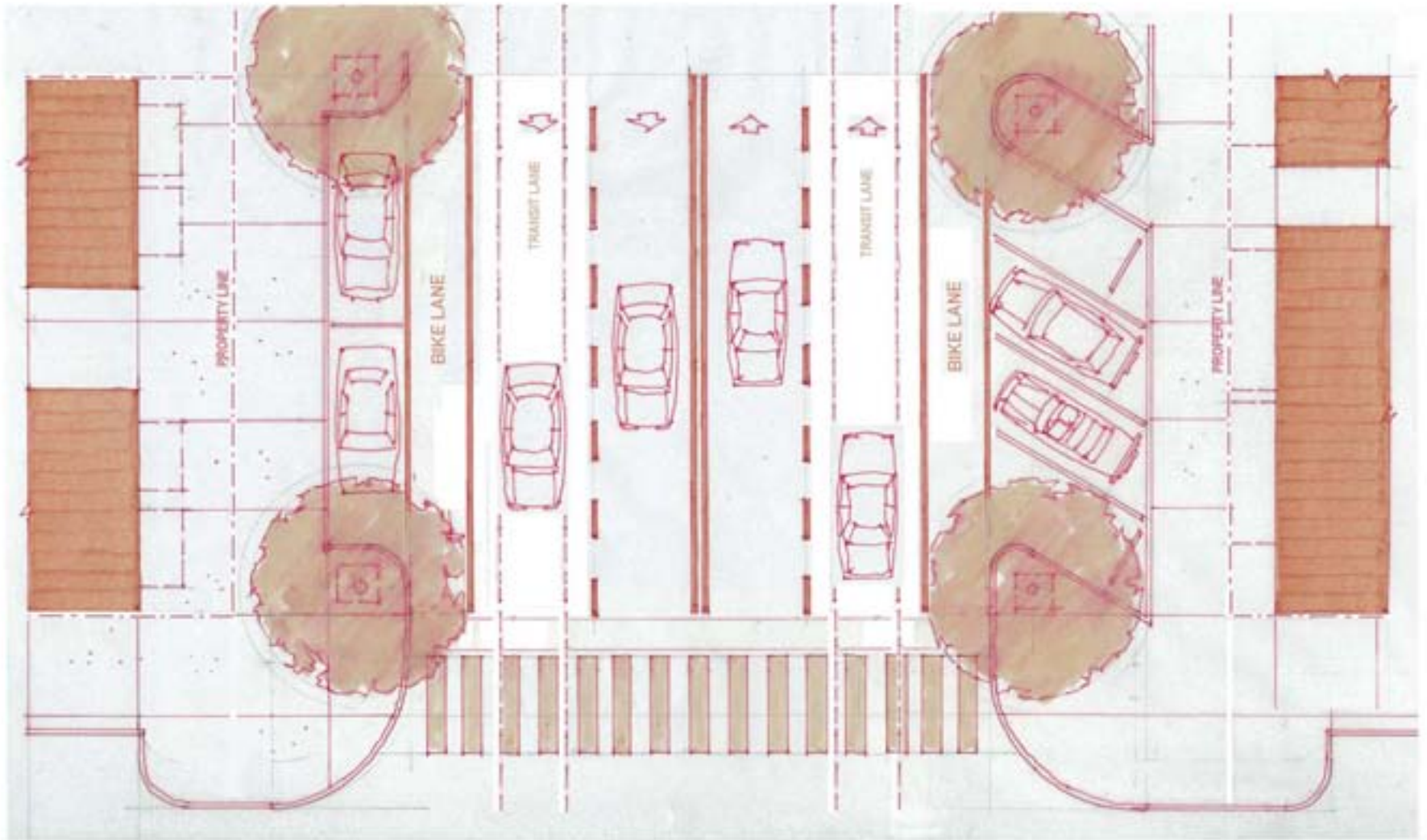
Option 1 - Bird's Eye Perspective
Broadway Street (100' R.O.W.)



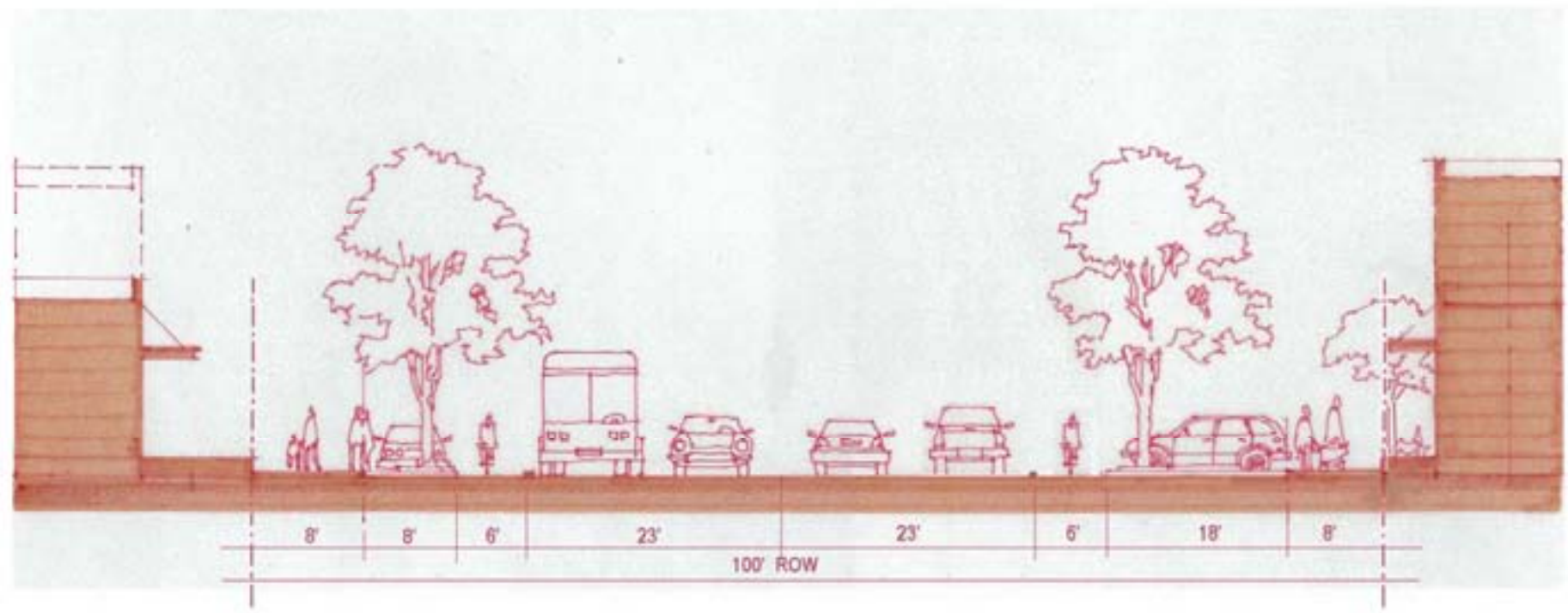
Option 1 - Bird's Eye Perspective
Broadway Street (100' R.O.W.)



Option 2 - Plan
Broadway Street (100' R.O.W.)



Option 2 - Section
Broadway Street (100' R.O.W.)



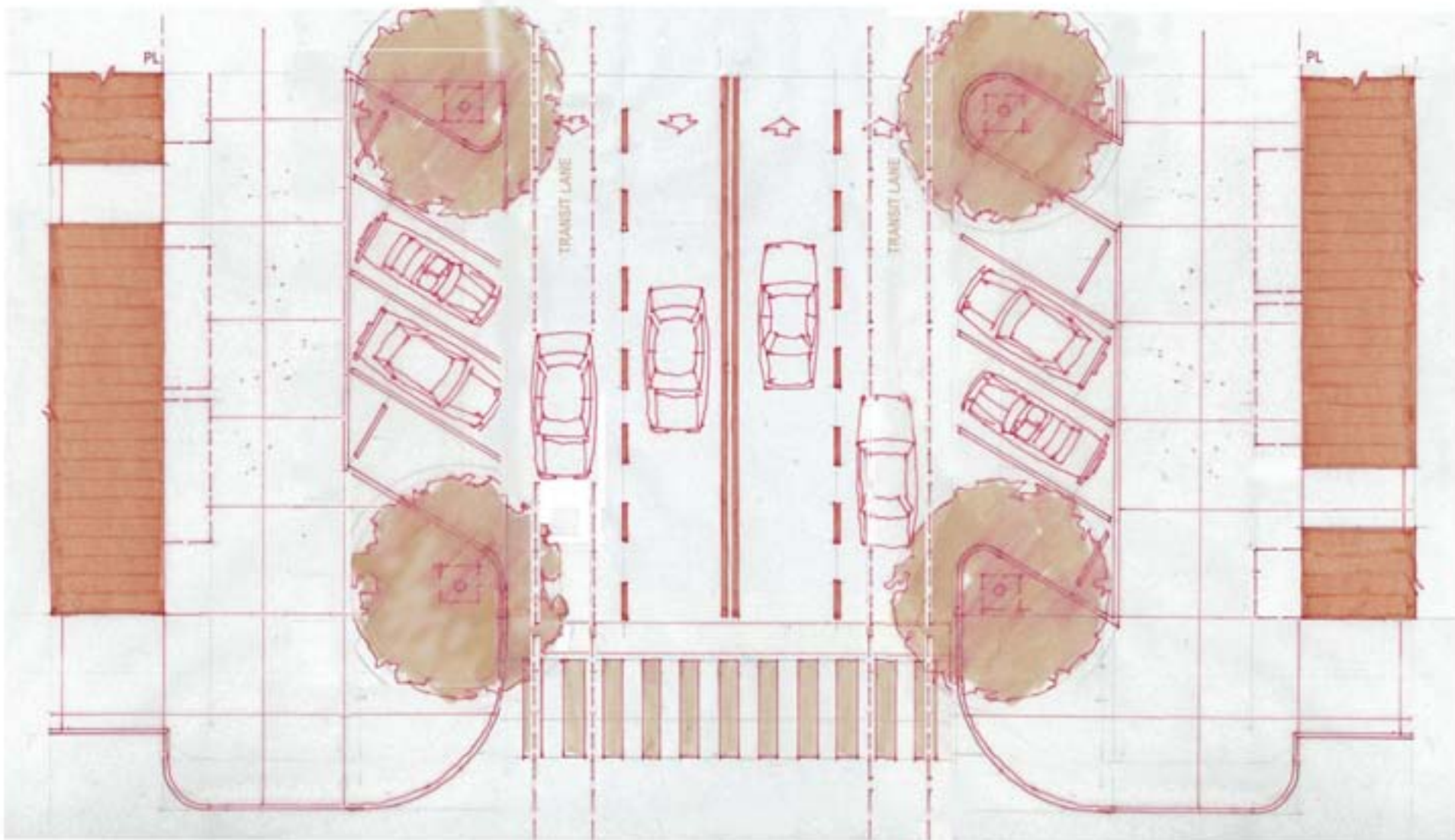
Option 2 - Bird's Eye Perspective
Broadway Street (100' R.O.W.)



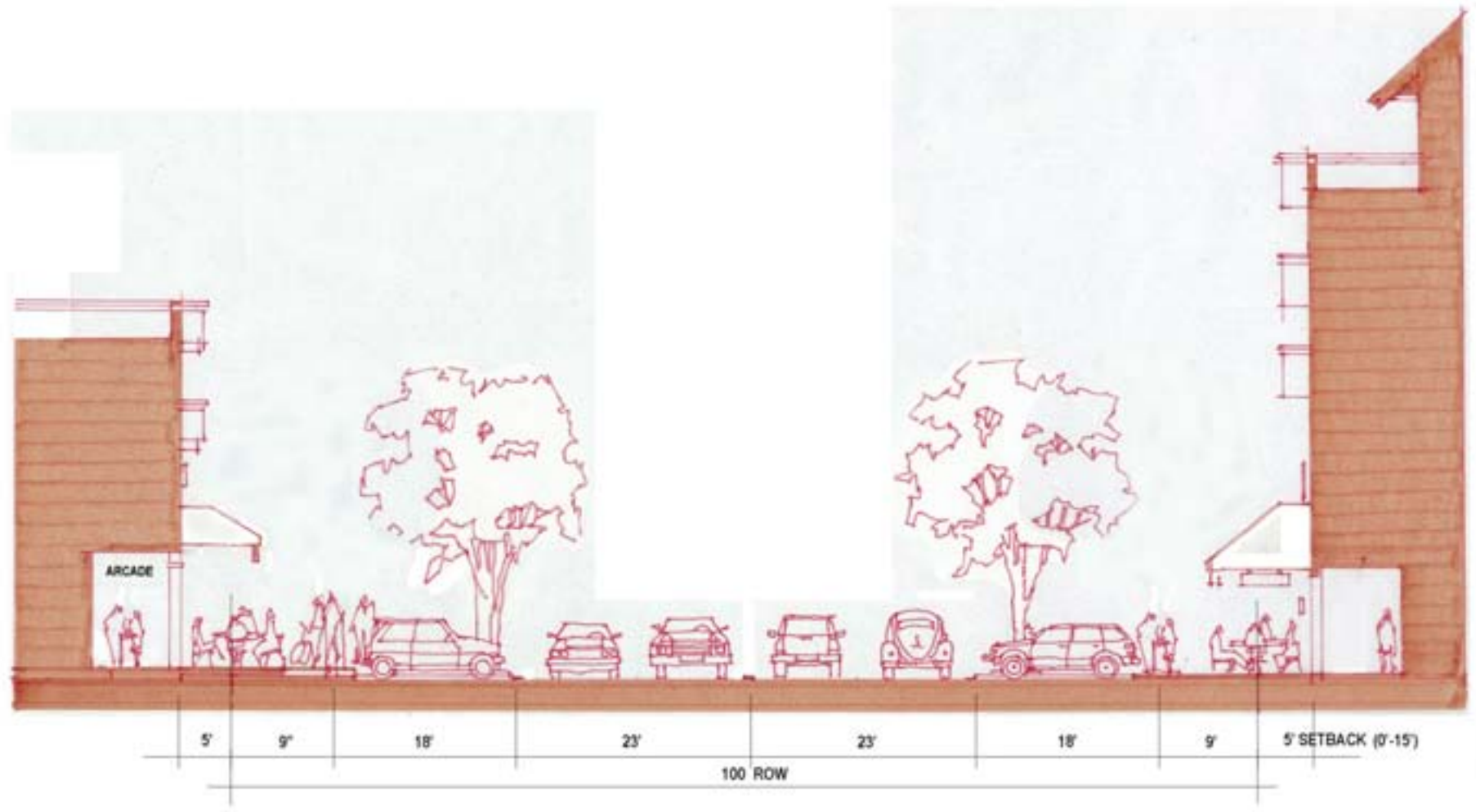
Option 2 - Street Perspective
Broadway Street (100' R.O.W.)



Option 3 - Plan
Broadway Street (100' R.O.W.)



Option 3 - Section
Broadway Street (100' R.O.W.)



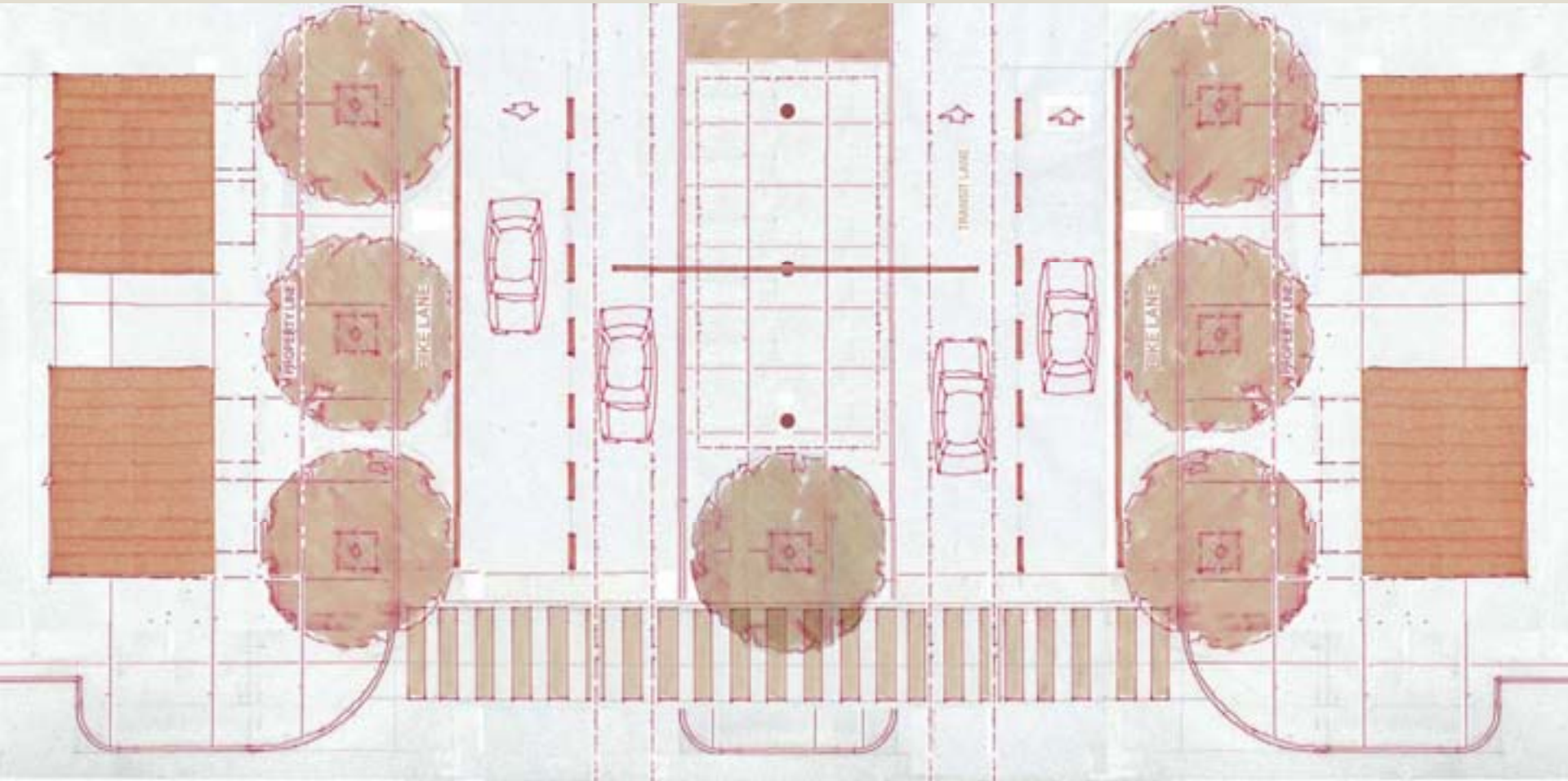
Option 3 - Bird's Eye Perspective
Broadway Street (100' R.O.W.)



Option 3 - Street Perspective
Broadway Street (100' R.O.W.)



Option 4 - Plan
Broadway Street (100' R.O.W.)



Option 4 – Bird's Eye Perspective
Broadway Street (100' R.O.W.)

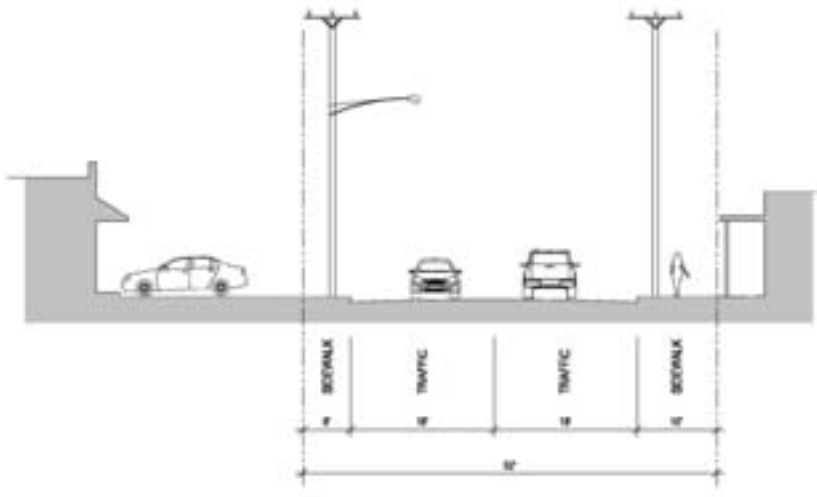


Option 4 - Street Perspective
Broadway Street (100' R.O.W.)



Existing Condition St. Mary's Street (52' R.O.W.)

Midtown *Brackenridge*
SAN ANTONIO, TEXAS

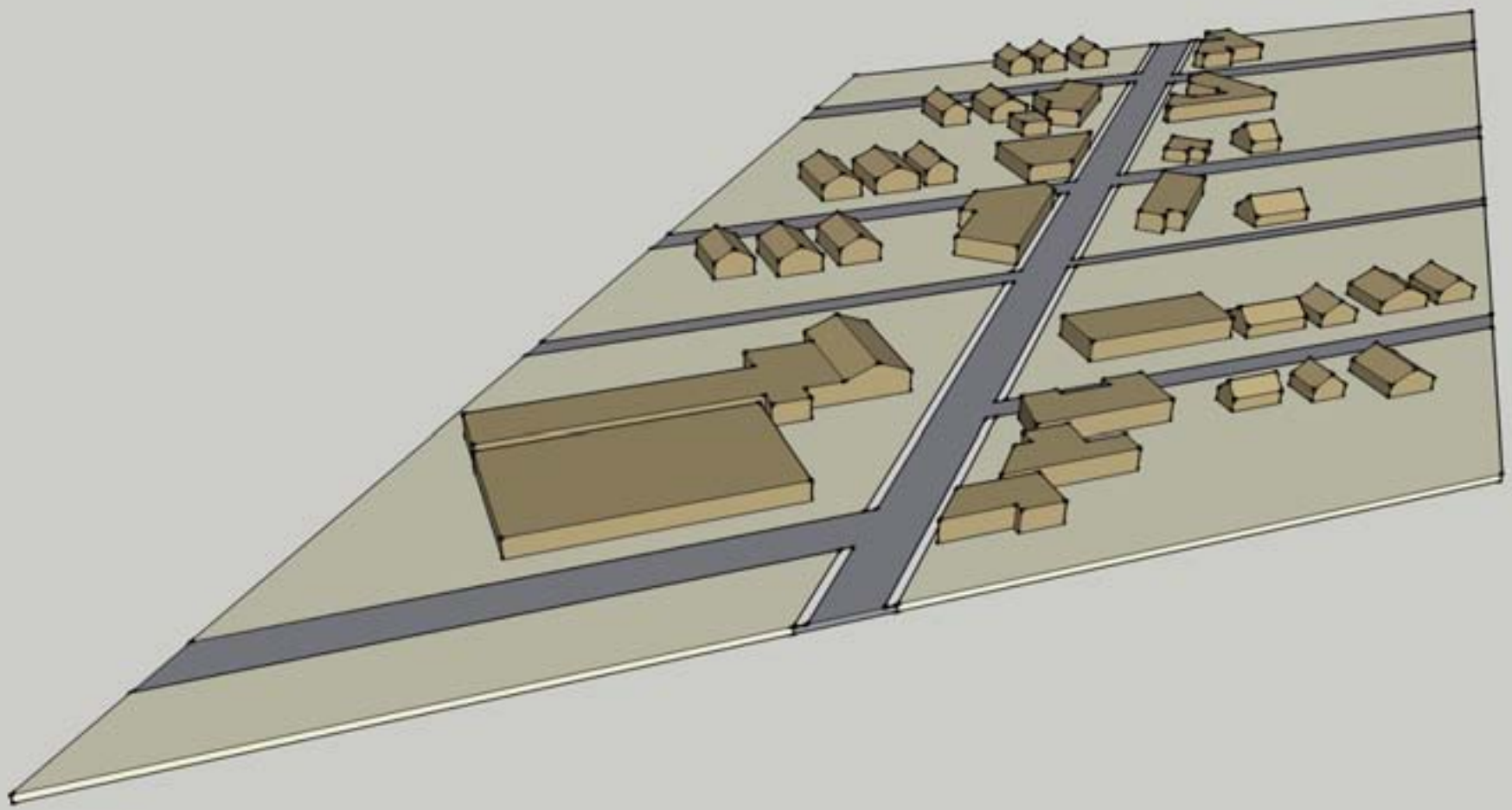


STREET SECTION 2 SCALE: 1/8" = 1'-0"

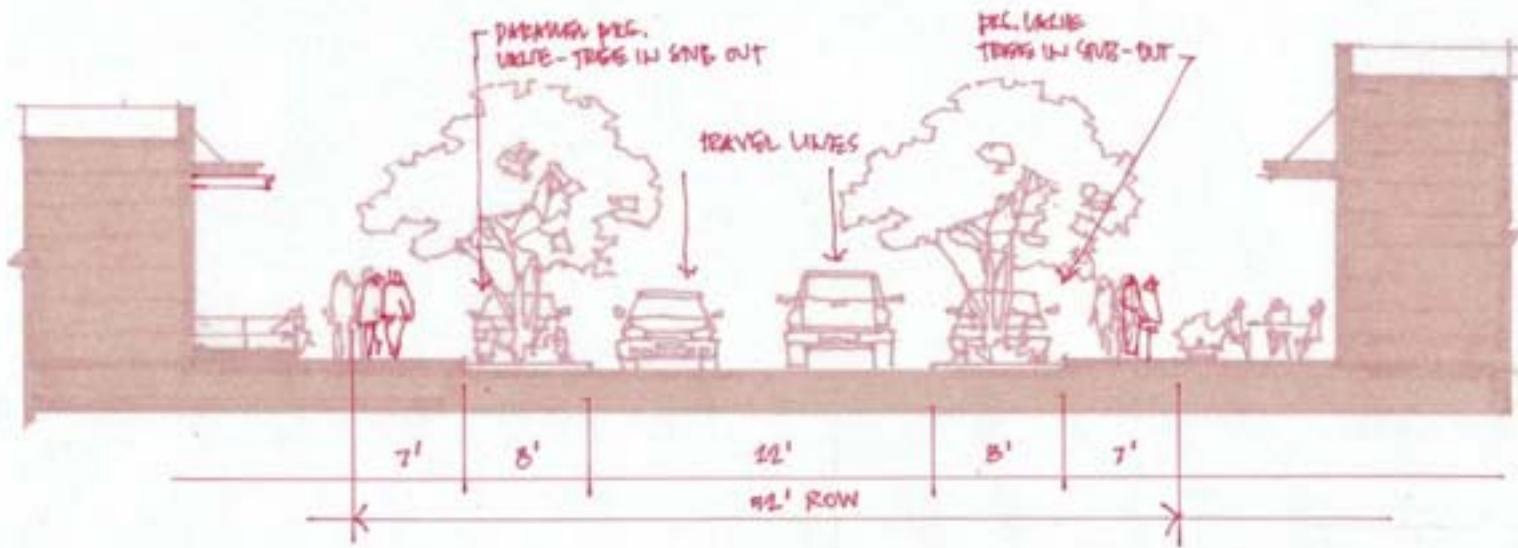


AERIAL PHOTO SCALE: 1/32" = 1'-0"

Existing Condition - Birds Eye Perspective
St. Mary's Street (52' R.O.W.)



Option 1 - Section
St. Mary's Street (52' R.O.W.)



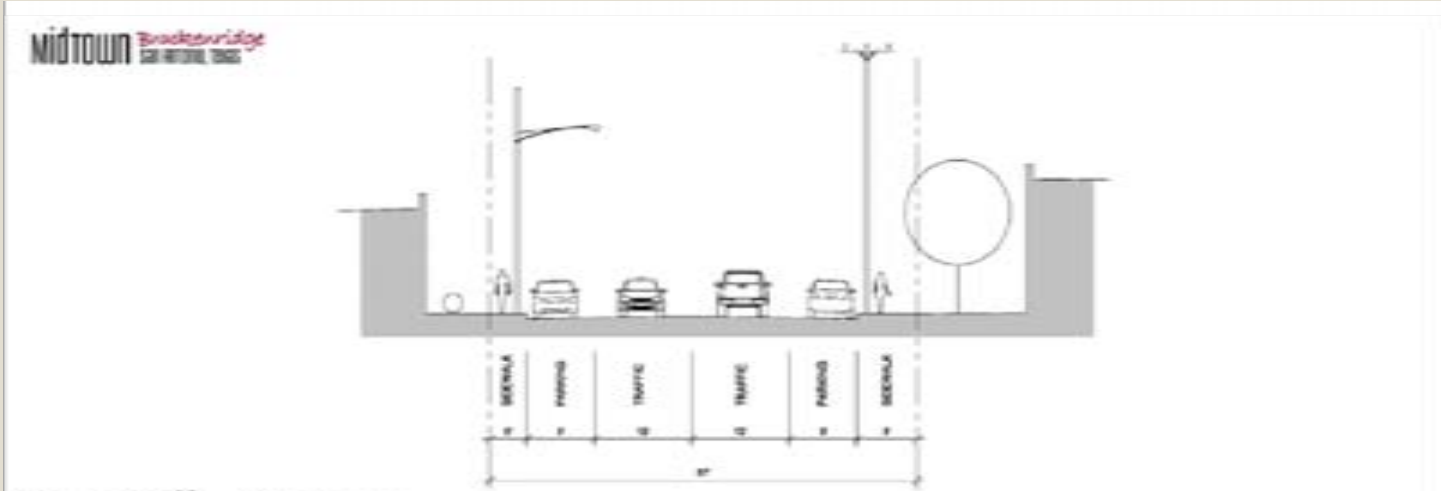
Existing Condition - Birds Eye Perspective
St. Mary's Street (52' R.O.W.)



Existing Condition - Birds Eye Perspective
St. Mary's Street (52' R.O.W.)



Existing Condition Josephine Street (57' R.O.W.)



Option 1 - Section
Josephine Street (57' R.O.W.)

